

## PHLDA3 Rabbit pAb

CatalogNo: YT3703

### Key Features

#### Host Species

- Rabbit

#### Reactivity

- Human, Mouse, Rat

#### Applications

- WB, IHC, IF, ELISA

#### MW

- 15kD (Observed)

#### Isotype

- IgG

### Recommended Dilution Ratios

**WB 1:500-1:2000**

**IHC 1:100-1:300**

**ELISA 1:40000**

**IF 1:50-200**

### Storage

**Storage\*** -15°C to -25°C/1 year (Do not lower than -25°C)

**Formulation** Liquid in PBS containing 50% glycerol, 0.5% BSA and 0.02% sodium azide.

### Basic Information

**Clonality** Polyclonal

### Immunogen Information

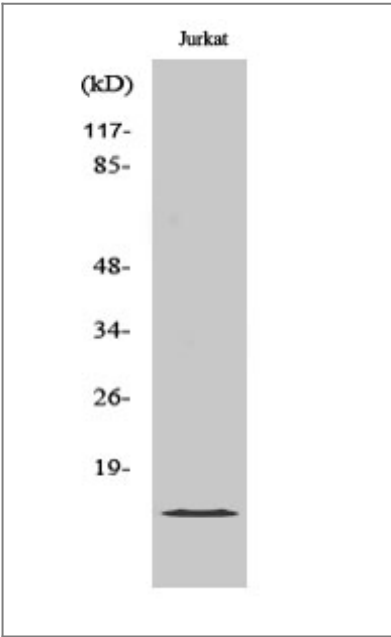
**Immunogen** The antiserum was produced against synthesized peptide derived from human PHLDA3. AA range: 21-70

**Specificity** PHLDA3 Polyclonal Antibody detects endogenous levels of PHLDA3 protein.

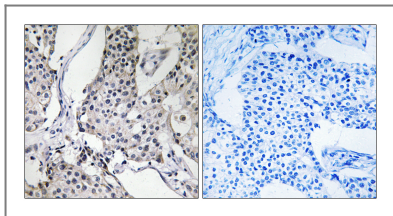
### Target Information

Gene name	PHLDA3		
Protein Name	Pleckstrin homology-like domain family A member 3		
	Organism	Gene ID	UniProt ID
	Human	<a href="#">23612;</a>	<a href="#">Q9Y5J5;</a>
	Mouse	<a href="#">27280;</a>	<a href="#">Q9WV95;</a>
	Rat	<a href="#">363989;</a>	<a href="#">Q5PQT7;</a>
Cellular Localization	Cytoplasm . Membrane ; Peripheral membrane protein .		
Tissue specificity	Widely expressed with lowest expression in liver and spleen.		
Function	<p>Domain:The PH domain binds phosphoinositides with a broad specificity. It competes with the PH domain of AKT1 and directly interferes with AKT1 binding to phosphatidylinositol 4,5-bisphosphate (PIP2) and phosphatidylinositol 3,4,5-triphosphate (PIP3), preventing AKT1 association to membrane lipids and subsequent activation of AKT1 signaling.,Function:p53/TP53-regulated repressor of Akt/AKT1 signaling. Represses AKT1 by preventing AKT1-binding to membrane lipids, thereby inhibiting AKT1 translocation to the cellular membrane and activation. Contributes to p53/TP53-dependent apoptosis by repressing AKT1 activity. Its directs transcription regulation by p53/TP53 may explain how p53/TP53 can negatively regulate AKT1. May acts as a tumor suppressor.,induction:By p53/TP53; expression is directly activated by p53/TP53. p53/TP53 phosphorylation on 'Ser-15' is required to activate the PHLDA3 promoter.,miscellaneous:PHLDA3 genomic locus is frequently observed in primary lung cancers, suggesting a role in tumor suppression.,similarity:Belongs to the PHLDA3 family.,similarity:Contains 1 PH domain.,tissue specificity:Widely expressed with lowest expression in liver and spleen.,</p>		

| Validation Data



Western Blot analysis of various cells using PHLDA3 Polyclonal Antibody



Immunohistochemistry analysis of paraffin-embedded human breast carcinoma tissue, using PHLDA3 Antibody. The picture on the right is blocked with the synthesized peptide.

## | Contact information

Orders: [order@immunoway.com](mailto:order@immunoway.com)  
Support: [tech@immunoway.com](mailto:tech@immunoway.com)  
Telephone: 877-594-3616 (Toll Free), 408-747-0185  
Website: <http://www.immunoway.com>  
Address: 2200 Ringwood Ave San Jose, CA 95131 USA



Please scan the QR code to access additional product information:

**PHLDA3 Rabbit pAb**

---

For Research Use Only. Not for Use in Diagnostic Procedures.

[Antibody](#) | [ELISA Kits](#) | [Protein](#) | [Reagents](#)