

PHKA1/2 Rabbit pAb

CatalogNo: YT3700

Key Features

Host Species

- Rabbit

Reactivity

- Human, Mouse, Rat

Applications

- WB, IF, ELISA, IHC

MW

- 137kD (Observed)

Isotype

- IgG

Recommended Dilution Ratios

WB 1:500-2000

IHC 1:50-300

IF 1:200-1:1000

ELISA 1:2000-20000

Storage

Storage* -15°C to -25°C/1 year (Do not lower than -25°C)

Formulation Liquid in PBS containing 50% glycerol, 0.5% BSA and 0.02% sodium azide.

Basic Information

Clonality Polyclonal

Immunogen Information

Immunogen The antiserum was produced against synthesized peptide derived from human KPBI/2. AA range:31-80

Specificity PHKA1/2 Polyclonal Antibody detects endogenous levels of PHKA1/2 protein.

Target Information

Gene name PHKA1/PHKA2

Protein Name Phosphorylase b kinase regulatory subunit alpha skeletal muscle isoform/Phosphorylase b kinase regulatory subunit alpha liver isoform

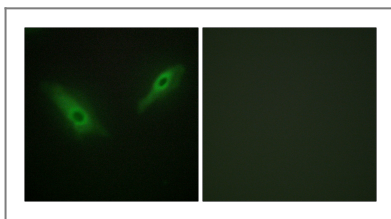
Organism	Gene ID	UniProt ID
Human	5255 ; 5256 ;	P46020 ; P46019 ;
Mouse	18679 ; 110094 ;	
Rat	64561 ;	Q64649 ;

Cellular Localization Cell membrane ; Lipid-anchor ; Cytoplasmic side .

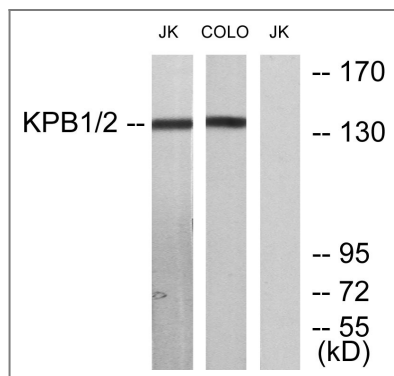
Tissue specificity Muscle specific. Isoform 1 is predominant in vastus lateralis muscle. Isoform 2 predominates slightly in heart, and it predominates clearly in the other tissues tested.

Function Disease:Defects in PHKA1 are the cause of glycogen storage disease type 9D (GSD9D) [MIM:300559]; also known as X-linked muscle glycogenosis. GSD9D is a metabolic disorder characterized by slowly progressive, predominantly distal muscle weakness and atrophy. Clinical features include exercise intolerance with early fatiguability, pain, cramps and occasionally myoglobinuria.,enzyme regulation:By phosphorylation of various serine residues. Allosteric regulation by calcium.,Function:Phosphorylase b kinase catalyzes the phosphorylation of serine in certain substrates, including troponin I. The alpha chain may bind calmodulin.,pathway:Glycan biosynthesis; glycogen metabolism.,similarity:Belongs to the phosphorylase b kinase regulatory chain family.,subunit:Polymer of 16 chains, four each of alpha, beta, gamma, and delta. Alpha and beta are regulatory chains, gamma is the catalytic chain, and delta is calmodulin.,tissue specificity:Muscle specific. Isoform 1 is predominant in vastus lateralis muscle. Isoform 2 predominates slightly in heart, and it predominates clearly in the other tissues tested.,

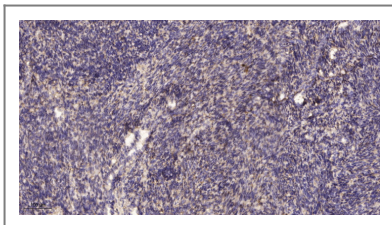
Validation Data



Immunofluorescence analysis of HeLa cells, using KPBI/2 Antibody. The picture on the right is blocked with the synthesized peptide.



Western blot analysis of lysates from Jurkat and COLO205 cells, using KPBI/2 Antibody. The lane on the right is blocked with the synthesized peptide.



Immunohistochemical analysis of paraffin-embedded human uterus. 1, Antibody was diluted at 1:200(4° overnight). 2, Tris-EDTA,pH9.0 was used for antigen retrieval. 3,Secondary antibody was diluted at 1:200(room temperature, 45min).

| Contact information

Orders: order@immunoway.com
Support: tech@immunoway.com
Telephone: 877-594-3616 (Toll Free), 408-747-0185
Website: <http://www.immunoway.com>
Address: 2200 Ringwood Ave San Jose, CA 95131 USA



Please scan the QR code to access additional product information:
PKA1/2 Rabbit pAb

For Research Use Only. Not for Use in Diagnostic Procedures.

[Antibody](#) | [ELISA Kits](#) | [Protein](#) | [Reagents](#)