

PHF3 Rabbit pAb

CatalogNo: YT3698

Key Features

Host Species

- Rabbit

Reactivity

- Human, Mouse

Applications

- WB, IHC, IF, ELISA

MW

- 230kD (Observed)

Isotype

- IgG

Recommended Dilution Ratios

WB 1:500-1:2000

IHC 1:100-1:300

ELISA 1:40000

IF 1:50-200

Storage

Storage*

-15°C to -25°C/1 year (Do not lower than -25°C)

Formulation

Liquid in PBS containing 50% glycerol, 0.5% BSA and 0.02% sodium azide.

Basic Information

Clonality

Polyclonal

Immunogen Information

Immunogen

The antiserum was produced against synthesized peptide derived from human PHF3. AA range: 1990-2039

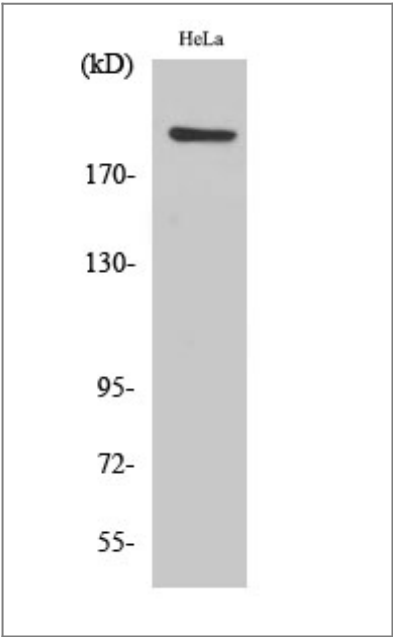
Specificity

PHF3 Polyclonal Antibody detects endogenous levels of PHF3 protein.

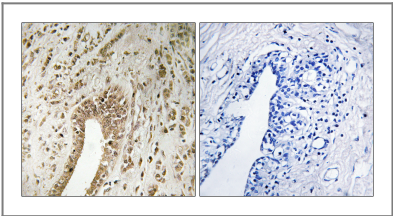
Target Information

Gene name	PHF3		
Protein Name	PHD finger protein 3		
	Organism	Gene ID	UniProt ID
	Human	23469 ;	Q92576 ;
Tissue specificity	Ubiquitous. Expression is significantly reduced or lost in glioblastomas, glioblastoma cell lines, anaplastic astrocytomas, and astrocytomas.		
Function	PTM:Phosphorylated upon DNA damage, probably by ATM or ATR.,similarity:Contains 1 PHD-type zinc finger.,similarity:Contains 1 TFIIIS central domain.,tissue specificity:Ubiquitous. Expression is significantly reduced or lost in glioblastomas, glioblastoma cell lines, anaplastic astrocytomas, and astrocytomas.,		

Validation Data



Western Blot analysis of various cells using PHF3 Polyclonal Antibody cells nucleus extracted by Minute TM Cytoplasmic and Nuclear Fractionation kit (SC-003,Inventbiotech,MN,USA).



Immunohistochemistry analysis of paraffin-embedded human breast carcinoma tissue, using PHF3 Antibody. The picture on the right is blocked with the synthesized peptide.

Contact information

Orders: order@immunoway.com
Support: tech@immunoway.com
Telephone: 877-594-3616 (Toll Free), 408-747-0185
Website: http://www.immunoway.com
Address: 2200 Ringwood Ave San Jose, CA 95131 USA



Please scan the QR code
to access additional
product information:
PHF3 Rabbit pAb

For Research Use Only. Not for Use in Diagnostic Procedures.

[Antibody](#) | [ELISA Kits](#) | [Protein](#) | [Reagents](#)