

## PHAPI2 Rabbit pAb

CatalogNo: YT3695

### Key Features

#### Host Species

- Rabbit

#### Reactivity

- Human, Mouse, Rat

#### Applications

- WB, ELISA, IHC

#### MW

- 29kD (Observed)

#### Isotype

- IgG

### Recommended Dilution Ratios

**WB 1:500-2000**

**IHC 1:50-300**

**ELISA 1:2000-20000**

### Storage

**Storage\*** -15°C to -25°C/1 year (Do not lower than -25°C)

**Formulation** Liquid in PBS containing 50% glycerol, 0.5% BSA and 0.02% sodium azide.

### Basic Information

**Clonality** Polyclonal

### Immunogen Information

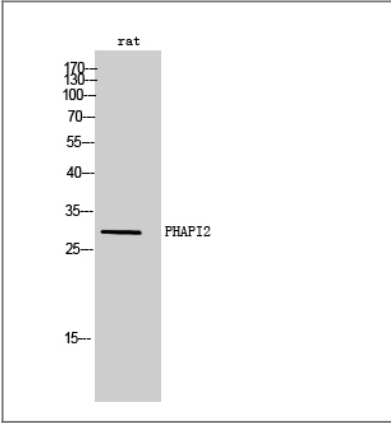
**Immunogen** The antiserum was produced against synthesized peptide derived from human ANP32B. AA range:1-50

**Specificity** PHAPI2 Polyclonal Antibody detects endogenous levels of PHAPI2 protein.

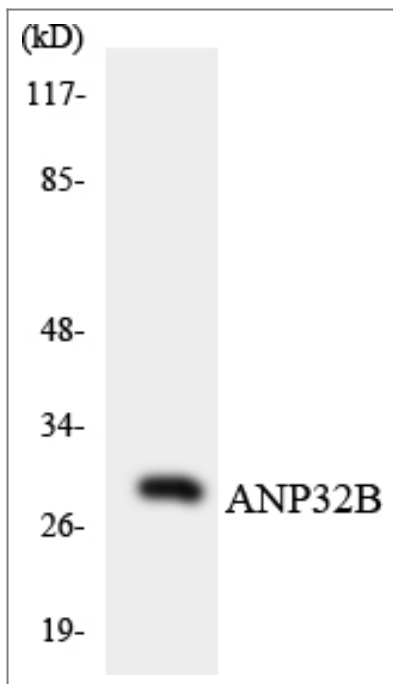
### Target Information

Gene name	ANP32B		
Protein Name	Acidic leucine-rich nuclear phosphoprotein 32 family member B		
	Organism	Gene ID	UniProt ID
	Human	<a href="#">10541</a> ;	<a href="#">Q92688</a> ;
	Mouse	<a href="#">67628</a> ;	<a href="#">Q9EST5</a> ;
	Rat	<a href="#">170724</a> ;	<a href="#">Q9EST6</a> ;
Cellular Localization	[Isoform 1]: Nucleus . Cytoplasm . Accumulates in the nuclei at the S phase. .; [Isoform 2]: Cytoplasm. Lacks a nuclear localization signal.		
Tissue specificity	Expressed in heart, lung, pancreas, prostate and in spleen, thymus and placenta.		
Function	Function:Multifunctional protein working as a cell cycle progression factor as well as a cell survival factor. Required for the progression from the G1 to the S phase. Anti-apoptotic protein which functions as a caspase-3 inhibitor. Has no phosphatase 2A (PP2A) inhibitor activity.,similarity:Belongs to the ANP32 family.,similarity:Contains 4 LRR (leucine-rich) repeats.,subcellular location:Accumulates in the nuclei at the S phase.,tissue specificity:Expressed in heart, lung, pancreas, prostate and in spleen, thymus and placenta.,		

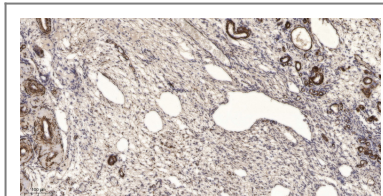
| Validation Data



Western Blot analysis of rat cells using PHAP12 Polyclonal Antibody cells nucleus extracted by Minute TM Cytoplasmic and Nuclear Fractionation kit (SC-003,Inventbiotech,MN,USA).



Western blot analysis of the lysates from HeLa cells using ANP32B antibody.



Immunohistochemical analysis of paraffin-embedded human oophoroma. 1, Antibody was diluted at 1:200(4° overnight). 2, Tris-EDTA,pH9.0 was used for antigen retrieval. 3,Secondary antibody was diluted at 1:200(room temperature, 45min).

## Contact information

Orders: [order@immunoway.com](mailto:order@immunoway.com)  
Support: [tech@immunoway.com](mailto:tech@immunoway.com)  
Telephone: 877-594-3616 (Toll Free), 408-747-0185  
Website: <http://www.immunoway.com>  
Address: 2200 Ringwood Ave San Jose, CA 95131 USA



Please scan the QR code  
to access additional  
product information:  
**PHAPI2 Rabbit pAb**

For Research Use Only. Not for Use in Diagnostic Procedures.

[Antibody](#) | [ELISA Kits](#) | [Protein](#) | [Reagents](#)