

## PFK-2 liv/tes Rabbit pAb

CatalogNo: YT3684

### Key Features

#### Host Species

- Rabbit

#### Reactivity

- Human, Mouse, Rat

#### Applications

- WB, ELISA, IHC

#### MW

- 54kD (Observed)

#### Isotype

- IgG

### Storage

**Storage\*** -15°C to -25°C/1 year (Do not lower than -25°C)

**Formulation** Liquid in PBS containing 50% glycerol, 0.5% BSA and 0.02% sodium azide.

### Recommended Dilution Ratios

**WB 1:500-2000**

**IHC 1:50-300**

**ELISA 1:2000-20000**

### Basic Information

**Clonality** Polyclonal

### Immunogen Information

**Immunogen** The antiserum was produced against synthesized peptide derived from human PFKFB1/4. AA range:331-380

**Specificity** PFK-2 liv/tes Polyclonal Antibody detects endogenous levels of PFK-2 liv/tes protein.

### Target Information

**Gene name** PFKFB1/PFKFB4

**Protein Name** 6-phosphofructo-2-kinase/fructose-2,6-biphosphate 1/4

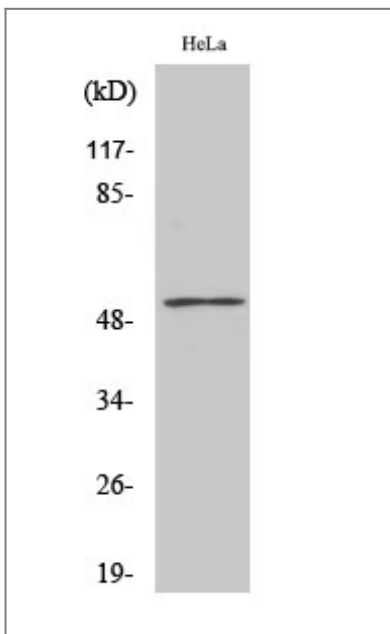
Organism	Gene ID	UniProt ID
Human	<a href="#">5207</a> ; <a href="#">5210</a> ;	<a href="#">P16118</a> ; <a href="#">Q16877</a> ;
Mouse	<a href="#">18639</a> ; <a href="#">270198</a> ;	
Rat	<a href="#">24638</a> ; <a href="#">54283</a> ;	<a href="#">P07953</a> ; <a href="#">P25114</a> ;

**Cellular Localization** cytosol,6-phosphofructo-2-kinase/fructose-2,6-biphosphate complex,

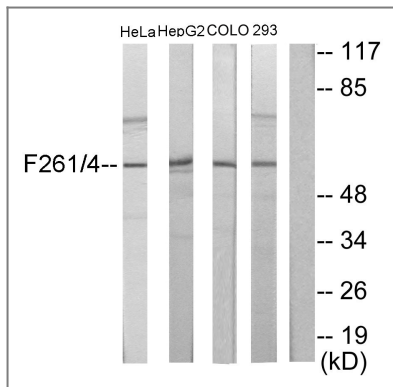
**Tissue specificity** Liver.

**Function** Catalytic activity:ATP + D-fructose 6-phosphate = ADP + beta-D-fructose 2,6-bisphosphate.,Catalytic activity:Beta-D-fructose 2,6-bisphosphate + H(2)O = D-fructose 6-phosphate + phosphate.,enzyme regulation:Phosphorylation results in inhibition of the kinase activity.,Function:Synthesis and degradation of fructose 2,6-bisphosphate.,similarity:In the C-terminal section; belongs to the phosphoglycerate mutase family.,subunit:Homodimer.,tissue specificity:Liver.,

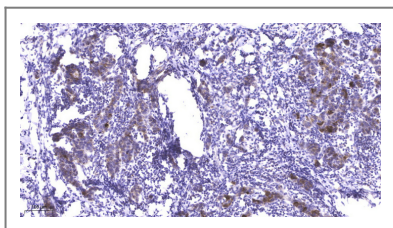
## Validation Data



Western Blot analysis of various cells using PFK-2 liv/tes Polyclonal Antibody



Western blot analysis of lysates from HeLa, HepG2, COLO205, and 293 cells, using PFKFB1/4 Antibody. The lane on the right is blocked with the synthesized peptide.



Immunohistochemical analysis of paraffin-embedded human Breast cancer. 1, Antibody was diluted at 1:200(4° overnight). 2, Tris-EDTA,pH9.0 was used for antigen retrieval. 3,Secondary antibody was diluted at 1:200(room temperature, 45min).

## Contact information

Orders: [order@immunoway.com](mailto:order@immunoway.com)  
 Support: [tech@immunoway.com](mailto:tech@immunoway.com)  
 Telephone: 877-594-3616 (Toll Free), 408-747-0185  
 Website: <http://www.immunoway.com>  
 Address: 2200 Ringwood Ave San Jose, CA 95131 USA



Please scan the QR code to access additional product information:  
**PFK-2 liv/tes Rabbit pAb**

For Research Use Only. Not for Use in Diagnostic Procedures.

[Antibody](#) | [ELISA Kits](#) | [Protein](#) | [Reagents](#)