

## PDZ-RhoGEF Rabbit pAb

CatalogNo: YT3652

### Key Features

#### Host Species

- Rabbit

#### Reactivity

- Human, Mouse, Rat

#### Applications

- WB, IHC

#### MW

- 168kD (Calculated)

#### Isotype

- IgG

### Recommended Dilution Ratios

WB 1:500-2000

IHC 1:50-300

### Storage

**Storage\*** -15°C to -25°C/1 year (Do not lower than -25°C)

**Formulation** Liquid in PBS containing 50% glycerol, 0.5% BSA and 0.02% sodium azide.

### Basic Information

**Clonality** Polyclonal

### Immunogen Information

**Immunogen** The antiserum was produced against synthesized peptide derived from human ARHGEF11. AA range:198-247

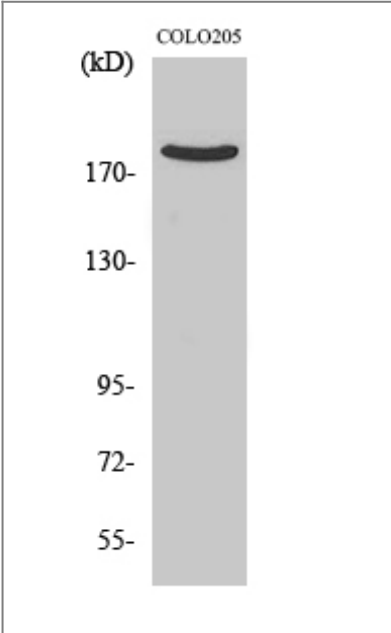
**Specificity** PDZ-RhoGEF Polyclonal Antibody detects endogenous levels of PDZ-RhoGEF protein.

### Target Information

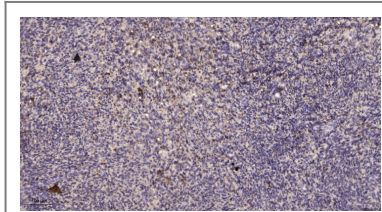
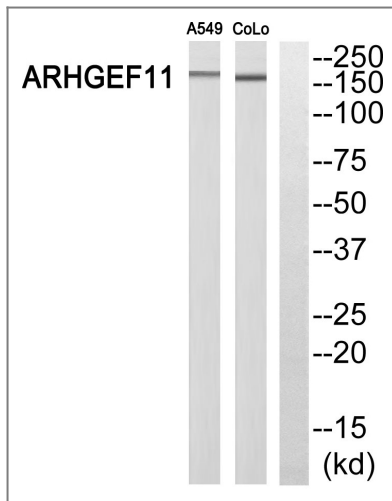
**Gene name** ARHGEF11

<b>Protein Name</b>	Rho guanine nucleotide exchange factor 11		
	<b>Organism</b>	<b>Gene ID</b>	<b>UniProt ID</b>
	Human	<a href="#">9826;</a>	<a href="#">O15085;</a>
	Rat	<a href="#">78966;</a>	<a href="#">Q9ES67;</a>
<b>Cellular Localization</b>	Cytoplasm . Membrane . Translocated to the membrane upon stimulation.		
<b>Tissue specificity</b>	Ubiquitously expressed.		
<b>Function</b>	Domain:The poly-Pro region is essential for plasma membrane localization upon stimulation.,Function:May play a role in the regulation of RhoA GTPase by guanine nucleotide-binding alpha-12 (GNA12) and alpha-13 (GNA13). Acts as guanine nucleotide exchange factor (GEF) for RhoA GTPase and may act as GTPase-activating protein (GAP) for GNA12 and GNA13.,similarity:Contains 1 DH (DBL-homology) domain.,similarity:Contains 1 PDZ (DHR) domain.,similarity:Contains 1 PH domain.,similarity:Contains 1 RGSL (RGS-like) domain.,subcellular location:Translocated to the membrane upon stimulation.,subunit:Interacts with GNA12 and GNA13 through the RGS domain. Interacts with RHOA, PLXNB1 and PLXNB2. Interacts with SLC1A6.,tissue specificity:Ubiquitously expressed.,		

Validation Data



Western Blot analysis of various cells using PDZ-RhoGEF Polyclonal Antibody



Immunohistochemical analysis of paraffin-embedded human uterus. 1, Antibody was diluted at 1:200(4° overnight). 2, Tris-EDTA,pH9.0 was used for antigen retrieval. 3,Secondary antibody was diluted at 1:200(room temperature, 45min).

## Contact information

Orders: [order@immunoway.com](mailto:order@immunoway.com)  
 Support: [tech@immunoway.com](mailto:tech@immunoway.com)  
 Telephone: 877-594-3616 (Toll Free), 408-747-0185  
 Website: <http://www.immunoway.com>  
 Address: 2200 Ringwood Ave San Jose, CA 95131 USA



Please scan the QR code to access additional product information:  
**PDZ-RhoGEF Rabbit pAb**

For Research Use Only. Not for Use in Diagnostic Procedures.

[Antibody](#) | [ELISA Kits](#) | [Protein](#) | [Reagents](#)