

## PC-PLD3 Rabbit pAb

CatalogNo: YT3621

### Key Features

#### Host Species

- Rabbit

#### Reactivity

- Human, Mouse, Rat

#### Applications

- IHC, IF, ELISA

#### MW

- 55kD (Calculated)

#### Isotype

- IgG

### Recommended Dilution Ratios

IHC 1:100-1:300

ELISA 1:5000

IF 1:50-200

### Storage

#### Storage\*

-15°C to -25°C/1 year (Do not lower than -25°C)

#### Formulation

Liquid in PBS containing 50% glycerol, 0.5% BSA and 0.02% sodium azide.

### Basic Information

#### Clonality

Polyclonal

### Immunogen Information

#### Immunogen

The antiserum was produced against synthesized peptide derived from human PLD3. AA range: 326-375

#### Specificity

PC-PLD3 Polyclonal Antibody detects endogenous levels of PC-PLD3 protein.

### Target Information

**Gene name** PLD3

**Protein Name** Phospholipase D3

Organism	Gene ID	UniProt ID
Human	<a href="#">23646;</a>	<a href="#">Q8IV08;</a>
Mouse	<a href="#">18807;</a>	<a href="#">O35405;</a>
Rat	<a href="#">361527;</a>	<a href="#">Q5FVH2;</a>

**Cellular  
Localization**

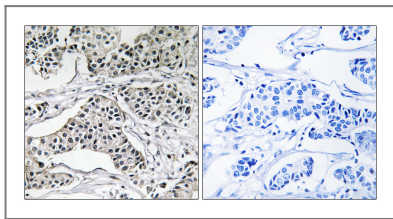
Endoplasmic reticulum membrane ; Single-pass type II membrane protein . Lysosome lumen . Early endosome membrane ; Single-pass type II membrane protein . Late endosome membrane ; Single-pass type II membrane protein . Golgi apparatus membrane ; Single-pass type II membrane protein . Endosome membrane ; Single-pass type II membrane protein . Localizes to ER-associated vesicles in differentiating myotubes (PubMed:22428023). The soluble form in lysosome arises by proteolytic processing of the membrane-bound form (PubMed:29386126). Colocalizes with APP in endosomes (PubMed:29368044). .

**Tissue specificity** Widely expressed. In the brain, high levels of expression are detected in the frontal, temporal and occipital cortices and hippocampus. Expressed at low level in corpus callosum.

**Function**

Catalytic activity:A phosphatidylcholine + H(2)O = choline + a phosphatidate.,PTM:Glycosylated.,similarity:Belongs to the phospholipase D family.,similarity:Contains 2 PLD phosphodiesterase domains.,tissue specificity:Widely expressed. Expresses at higher level in brain. Expresses at low level in corpus callosum, suggesting that it is highly expressed in neurons.,

## Validation Data



Immunohistochemistry analysis of paraffin-embedded human breast carcinoma tissue, using PLD3 Antibody. The picture on the right is blocked with the synthesized peptide.

## Contact information

Orders: [order@immunoway.com](mailto:order@immunoway.com)  
Support: [tech@immunoway.com](mailto:tech@immunoway.com)  
Telephone: 877-594-3616 (Toll Free), 408-747-0185  
Website: <http://www.immunoway.com>  
Address: 2200 Ringwood Ave San Jose, CA 95131 USA



Please scan the QR code to access additional product information:  
**PC-PLD3 Rabbit pAb**

