

PBFE Rabbit pAb

CatalogNo: YT3610

Key Features

Host Species

- Rabbit

Reactivity

- Human,Rat

Applications

- WB,IHC,IF,ELISA

MW

- 80kD (Observed)

Isotype

- IgG

Recommended Dilution Ratios

WB 1:500-1:2000

IHC 1:100-1:300

ELISA 1:10000

IF 1:50-200

Storage

Storage*

-15°C to -25°C/1 year(Do not lower than -25°C)

Formulation

Liquid in PBS containing 50% glycerol, 0.5% BSA and 0.02% sodium azide.

Basic Information

Clonality

Polyclonal

Immunogen Information

Immunogen

The antiserum was produced against synthesized peptide derived from human EHHADH. AA range:476-525

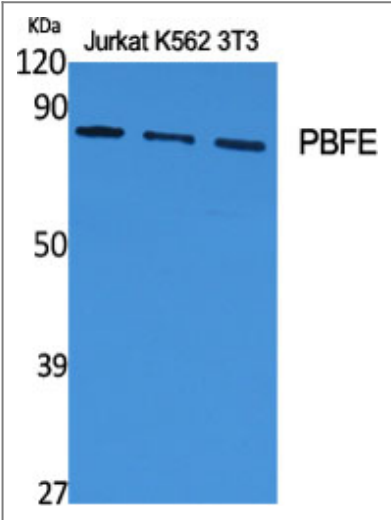
Specificity

PBFE Polyclonal Antibody detects endogenous levels of PBFE protein.

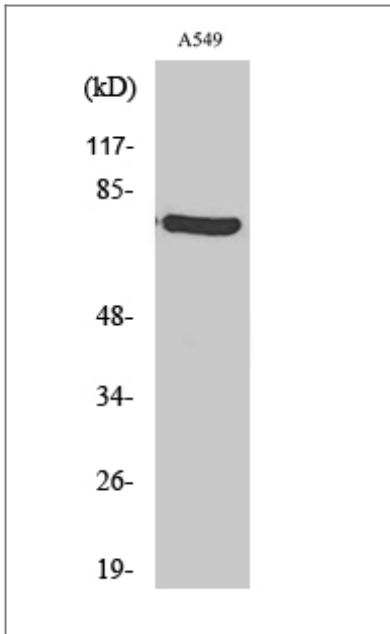
Target Information

Gene name	EHHADH		
Protein Name	Peroxisomal bifunctional enzyme		
	Organism	Gene ID	UniProt ID
	Human	1962;	Q08426;
	Mouse		Q9DBM2;
	Rat	171142;	P07896;
Cellular Localization	Peroxisome .		
Tissue specificity	Liver and kidney. Strongly expressed in the terminal segments of the proximal tubule. Lower amounts seen in the brain.		
Function	Catalytic activity:(3S)-3-hydroxyacyl-CoA = trans-2(or 3)-enoyl-CoA + H(2)O.,Catalytic activity:(3Z)-dodec-3-enoyl-CoA = (2E)-dodec-2-enoyl-CoA.,Catalytic activity:(S)-3-hydroxyacyl-CoA + NAD(+) = 3-oxoacyl-CoA + NADH.,Disease:Absent in patients suffering with peroxisomal disorders such as Zellweger syndrome, neonatal adrenoleukodystrophy and infantile Refsum disease.,pathway:Lipid metabolism; fatty acid beta-oxidation.,similarity:In the C-terminal section; belongs to the 3-hydroxyacyl-CoA dehydrogenase family.,similarity:In the N-terminal section; belongs to the enoyl-CoA hydratase/isomerase family.,subunit:Monomer.,tissue specificity:Liver and kidney. Lower amounts seen in the brain.,		

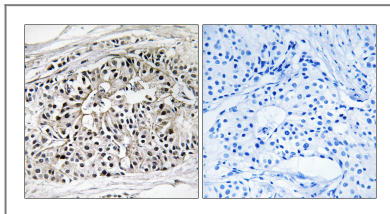
Validation Data



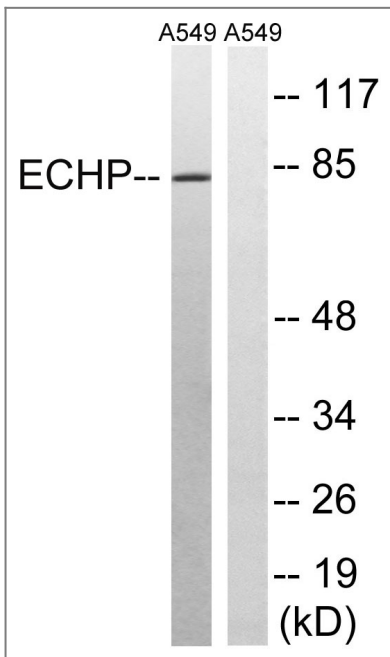
Western Blot analysis of various cells using PBFE Polyclonal Antibody



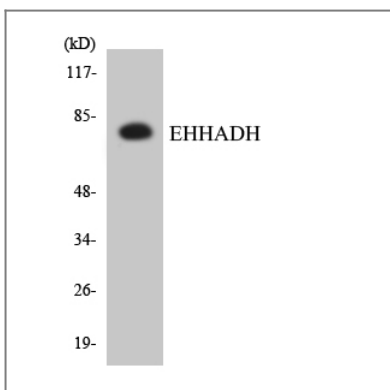
Western Blot analysis of A549 cells using PBFE Polyclonal Antibody



Immunohistochemistry analysis of paraffin-embedded human breast carcinoma tissue, using EHHADH Antibody. The picture on the right is blocked with the synthesized peptide.



Western blot analysis of lysates from A549 cells, using EHHADH Antibody. The lane on the right is blocked with the synthesized peptide.



Western blot analysis of the lysates from HepG2 cells using EHHADH antibody.

| Contact information

Orders: order@immunoway.com
Support: tech@immunoway.com
Telephone: 877-594-3616 (Toll Free), 408-747-0185
Website: <http://www.immunoway.com>
Address: 2200 Ringwood Ave San Jose, CA 95131 USA



Please scan the QR code
to access additional
product information:
PBFE Rabbit pAb

For Research Use Only. Not for Use in Diagnostic Procedures.

[Antibody](#) | [ELISA Kits](#) | [Protein](#) | [Reagents](#)