

PBF Rabbit pAb

CatalogNo: YT3609

| Key Features

Host Species

- Rabbit

Reactivity

- Human, Mouse, Rat

Applications

- WB, IHC, IF, ELISA

MW

- 20kD (Observed)

Isotype

- IgG

| Recommended Dilution Ratios

WB 1:500-1:2000

IHC 1:100-1:300

IF 1:200-1:1000

ELISA 1:10000

Not yet tested in other applications.

| Storage

Storage*

-15°C to -25°C/1 year (Do not lower than -25°C)

Formulation

Liquid in PBS containing 50% glycerol, 0.5% BSA and 0.02% sodium azide.

| Basic Information

Clonality

Polyclonal

| Immunogen Information

Immunogen

The antiserum was produced against synthesized peptide derived from human PTTG. AA range: 116-165

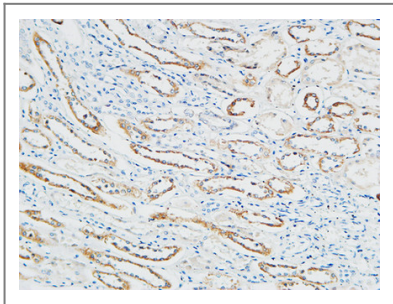
Specificity

PBF Polyclonal Antibody detects endogenous levels of PBF protein.

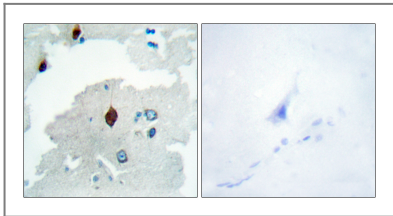
| Target Information

Gene name	PTTG1IP		
Protein Name	Pituitary tumor-transforming gene 1 protein-interacting protein		
	Organism	Gene ID	UniProt ID
	Human	754 ;	P53801 ;
	Mouse	108705 ;	Q8R143 ;
	Rat	365548 ;	Q6P767 ;
Cellular Localization	Membrane ; Single-pass type I membrane protein . Cytoplasm . Nucleus . According to PubMed:10781616, it is found in the cytoplasm and the nucleus.		
Tissue specificity	Ubiquitous.		
Function	Function:May facilitate PTTG1 nuclear translocation.,induction:By transcription factor RUNX2.,subcellular location:According to PubMed:10781616 it is found in the cytoplasm and the nucleus.,subunit:Interacts with PTTG1.,tissue specificity:Ubiquitous.,		

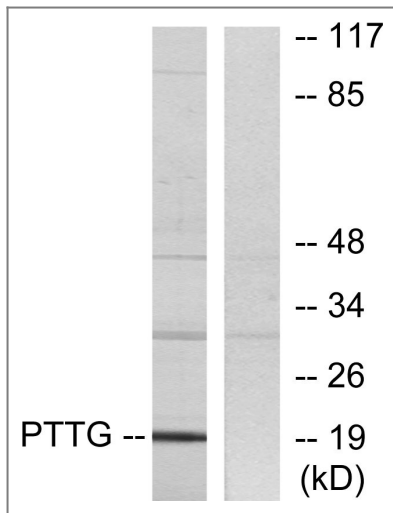
| Validation Data



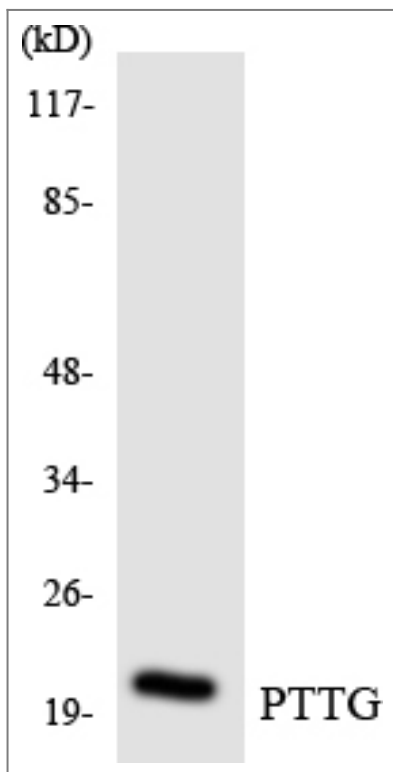
Immunohistochemical analysis of paraffin-embedded Human Right kidney. 1, Antibody was diluted at 1:100(4° overnight). 2, High-pressure and temperature EDTA, pH8.0 was used for antigen retrieval. 3,Secondary antibody was diluted at 1:200(room temperature, 30min).



Immunohistochemistry analysis of paraffin-embedded human brain tissue, using PTTG Antibody. The picture on the right is blocked with the synthesized peptide.



Western blot analysis of lysates from RAW264.7 cells, using PTTG Antibody. The lane on the right is blocked with the synthesized peptide.



Western blot analysis of the lysates from HeLa cells using PTTG antibody.

| Contact information

Orders: order@immunoway.com
Support: tech@immunoway.com
Telephone: 877-594-3616 (Toll Free), 408-747-0185
Website: <http://www.immunoway.com>
Address: 2200 Ringwood Ave San Jose, CA 95131 USA



Please scan the QR code
to access additional
product information:
PBF Rabbit pAb