

## PAR-6 $\beta$ Rabbit pAb

CatalogNo: YT3589

### Key Features

#### Host Species

- Rabbit

#### Reactivity

- Human, Mouse

#### Applications

- WB, IHC, IF, ELISA

#### MW

- 38kD (Observed)

#### Isotype

- IgG

### Recommended Dilution Ratios

**WB 1:500-1:2000**

**IHC 1:100-1:300**

**ELISA 1:5000**

**IF 1:50-200**

### Storage

#### Storage\*

-15°C to -25°C/1 year (Do not lower than -25°C)

#### Formulation

Liquid in PBS containing 50% glycerol, 0.5% BSA and 0.02% sodium azide.

### Basic Information

#### Clonality

Polyclonal

### Immunogen Information

#### Immunogen

The antiserum was produced against synthesized peptide derived from human PARD6B. AA range: 233-282

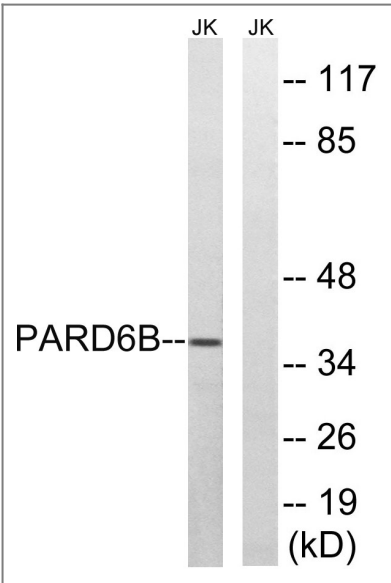
#### Specificity

PAR-6 $\beta$  Polyclonal Antibody detects endogenous levels of PAR-6 $\beta$  protein.

### Target Information

Gene name	PARD6B		
Protein Name	Partitioning defective 6 homolog beta		
	Organism	Gene ID	UniProt ID
	Human	<a href="#">84612</a> ;	<a href="#">Q9BYG5</a> ;
	Mouse	<a href="#">58220</a> ;	<a href="#">Q9JK83</a> ;
Cellular Localization	Cytoplasm. Cell membrane . Cell junction, tight junction .		
Tissue specificity	Expressed in pancreas and in both adult and fetal kidney. Weakly expressed in placenta and lung. Not expressed in other tissues.		
Function	<p>Domain:The PDZ domain mediates interaction with MPP5.,Domain:The pseudo-CRIB domain together with the PDZ domain is required for the interaction with Rho small GTPases.,Function:Adapter protein involved in asymmetrical cell division and cell polarization processes. Probably involved in formation of epithelial tight junctions. Association with PARD3 may prevent the interaction of PARD3 with F11R/JAM1, thereby preventing tight junction assembly. The PARD6-PARD3 complex links GTP-bound Rho small GTPases to atypical protein kinase C proteins.,similarity:Belongs to the PAR6 family.,similarity:Contains 1 OPR domain.,similarity:Contains 1 PDZ (DHR) domain.,similarity:Contains 1 pseudo-CRIB domain.,subunit:Interacts with PARD3. Interacts with GTP-bound forms of CDC42 and RAC1. Interacts with GTP-bound ARHQ/TC10. Interacts with MPP5 (By similarity). Interacts with the N-terminal part of PRKCI and PRKCZ. Part of a complex with PARD3, CDC42 or RAC1 and PRKCI or PRKCZ. Part of a complex with LLGL1 and PRKCI. Interacts with ALS2CR19.,tissue specificity:Expressed in pancreas and in both adult and fetal kidney. Weakly expressed in placenta and lung. Not expressed in other tissues.,</p>		

| Validation Data



Western blot analysis of lysates from Jurkat cells, using PARD6B Antibody. The lane on the right is blocked with the synthesized peptide.

## | Contact information

Orders: order@immunoway.com  
Support: tech@immunoway.com  
Telephone: 877-594-3616 (Toll Free), 408-747-0185  
Website: <http://www.immunoway.com>  
Address: 2200 Ringwood Ave San Jose, CA 95131 USA



Please scan the QR code  
to access additional  
product information:  
**PAR-6 $\beta$  Rabbit pAb**

---

For Research Use Only. Not for Use in Diagnostic Procedures.

[Antibody](#) | [ELISA Kits](#) | [Protein](#) | [Reagents](#)