

PAK4/5/6 Rabbit pAb

CatalogNo: YT3572

Orthogonal Validated 

Key Features

Host Species

- Rabbit

Reactivity

- Human, Mouse, Rat

Applications

- WB, ELISA

MW

- 80kD (Observed)

Isotype

- IgG

Recommended Dilution Ratios

WB 1:500-1:2000**ELISA 1:20000****Not yet tested in other applications.**

Storage

Storage*

-15°C to -25°C/1 year (Do not lower than -25°C)

Formulation

Liquid in PBS containing 50% glycerol, 0.5% BSA and 0.02% sodium azide.

Basic Information

Clonality

Polyclonal

Immunogen Information

Immunogen

The antiserum was produced against synthesized peptide derived from human PAK4/5/6. AA range: 441-490

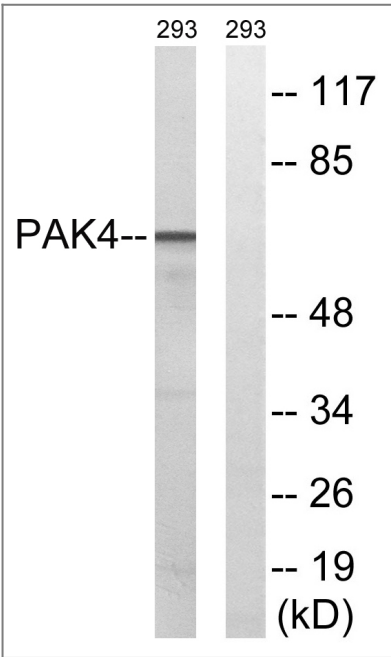
Specificity

PAK4/5/6 Polyclonal Antibody detects endogenous levels of PAK4/5/6 protein.

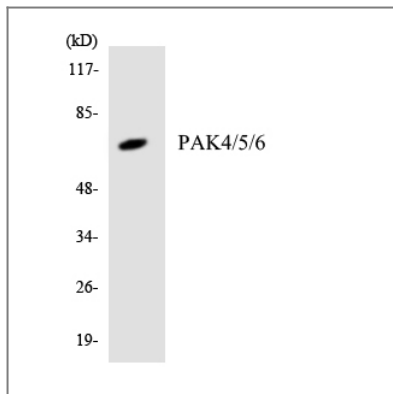
Target Information

Gene name	PAK4 PAK5 PAK6		
Protein Name	Serine/threonine-protein kinase PAK 4		
	Organism	Gene ID	UniProt ID
	Human	10298 ;	O96013 ; Q9P286 ; Q9NQU5 ;
	Mouse	70584 ;	Q8BTW9 ;
Cellular Localization	Cytoplasm . Seems to shuttle between cytoplasmic compartments depending on the activating effector. For example, can be found on the cell periphery after activation of growth-factor or integrin-mediated signaling pathways. .		
Tissue specificity	Highest expression in prostate, testis and colon.		
Function	Catalytic activity:ATP + a protein = ADP + a phosphoprotein.,Function:Activates the JNK pathway. Plays a role in the reorganization of the actin cytoskeleton and in the formation of filopodia. Phosphorylates and inactivates the protein phosphatase SSH1, leading to increased inhibitory phosphorylation of the actin binding/depolymerizing factor cofilin. Decreased cofilin activity may lead to stabilization of actin filaments. Phosphorylates ARHGEF2.,PTM:Autophosphorylated on serine residues when activated by CDC42/p21.,PTM:Phosphorylated on tyrosine residues upon stimulation of FGFR2.,similarity:Belongs to the protein kinase superfamily. STE Ser/Thr protein kinase family. STE20 subfamily.,similarity:Contains 1 CRIB domain.,similarity:Contains 1 protein kinase domain.,subunit:Interacts with FGFR2 and GRB2 (By similarity). Interacts tightly with GTP-bound but not GDP-bound CDC42/p21 and weakly with RAC1. Interacts with its substrate ARHGEF2.,tissue specificity:Highest expression in prostate, testis and colon.,		

Validation Data



Western blot analysis of lysates from K562 cells, treated with PMA 125ng/ml 30', using PAK4/5/6 Antibody. The lane on the right is blocked with the synthesized peptide.



Western blot analysis of the lysates from Jurkat cells using PAK4/5/6 antibody.

Contact information

Orders: order@immunoway.com
Support: tech@immunoway.com
Telephone: 877-594-3616 (Toll Free), 408-747-0185
Website: <http://www.immunoway.com>
Address: 2200 Ringwood Ave San Jose, CA 95131 USA



Please scan the QR code to access additional product information:
PAK4/5/6 Rabbit pAb

For Research Use Only. Not for Use in Diagnostic Procedures.

[Antibody](#) | [ELISA Kits](#) | [Protein](#) | [Reagents](#)