

## PAF-R Rabbit pAb

CatalogNo: YT3566

### Key Features

#### Host Species

- Rabbit

#### Reactivity

- Human, Mouse, Rat

#### Applications

- IF, ELISA

#### MW

- 39kD (Calculated)

#### Isotype

- IgG

### Recommended Dilution Ratios

**IF 1:200-1:1000**

**ELISA 1:10000**

**Not yet tested in other applications**

### Storage

#### Storage\*

-15°C to -25°C/1 year (Do not lower than -25°C)

#### Formulation

Liquid in PBS containing 50% glycerol, 0.5% BSA and 0.02% sodium azide.

### Basic Information

#### Clonality

Polyclonal

### Immunogen Information

#### Immunogen

The antiserum was produced against synthesized peptide derived from human PTAFR. AA range: 194-243

#### Specificity

PAF-R Polyclonal Antibody detects endogenous levels of PAF-R protein.

### Target Information

**Gene name** PTAFR

**Protein Name** Platelet-activating factor receptor

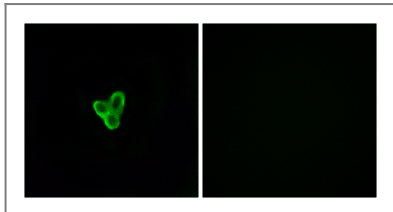
Organism	Gene ID	UniProt ID
Human	<a href="#">5724;</a>	<a href="#">P25105;</a>
Mouse	<a href="#">19204;</a>	<a href="#">Q62035;</a>
Rat	<a href="#">58949;</a>	<a href="#">P46002;</a>

**Cellular Localization** Cell membrane ; Multi-pass membrane protein .

**Tissue specificity** Expressed in the placenta, lung, left and right heart ventricles, heart atrium, leukocytes and differentiated HL-60 granulocytes.

**Function** Function:Receptor for platelet activating factor, a chemotactic phospholipid mediator that possesses potent inflammatory, smooth-muscle contractile and hypotensive activity. Seems to mediate its action via a G protein that activates a phosphatidylinositol-calcium second messenger system.,induction:By granulocyte macrophage colony-stimulating factor (GM-CSF), interleukin-5 and n-butyrate.,similarity:Belongs to the G-protein coupled receptor 1 family.,tissue specificity:Expressed in the placenta, lung, left and right heart ventricles, heart atrium, leukocytes and differentiated HL-60 granulocytes.,

## Validation Data



Immunofluorescence analysis of LOVO cells, using PTAFR Antibody. The picture on the right is blocked with the synthesized peptide.

## Contact information

Orders: [order@immunoway.com](mailto:order@immunoway.com)  
Support: [tech@immunoway.com](mailto:tech@immunoway.com)  
Telephone: 877-594-3616 (Toll Free), 408-747-0185  
Website: <http://www.immunoway.com>  
Address: 2200 Ringwood Ave San Jose, CA 95131 USA



Please scan the QR code to access additional product information:  
**PAF-R Rabbit pAb**