

## PABP5 Rabbit pAb

CatalogNo: YT3564

### Key Features

#### Host Species

- Rabbit

#### Reactivity

- Human

#### Applications

- WB,IHC,IF,ELISA

#### MW

- 43kD (Observed)

#### Isotype

- IgG

### Recommended Dilution Ratios

**WB 1:500-1:2000**

**IHC 1:100-1:300**

**ELISA 1:10000**

**IF 1:50-200**

### Storage

#### Storage\*

-15°C to -25°C/1 year(Do not lower than -25°C)

#### Formulation

Liquid in PBS containing 50% glycerol, 0.5% BSA and 0.02% sodium azide.

### Basic Information

#### Clonality

Polyclonal

### Immunogen Information

#### Immunogen

The antiserum was produced against synthesized peptide derived from human PABPC5. AA range:184-233

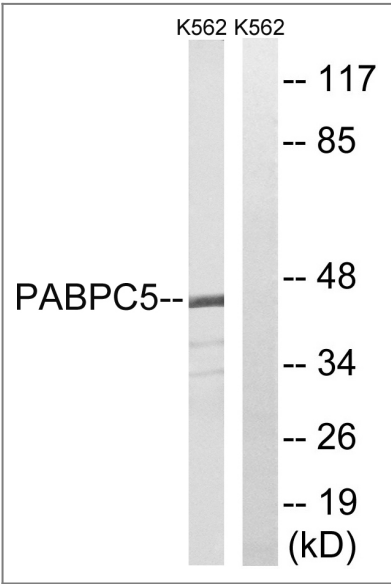
#### Specificity

PABP5 Polyclonal Antibody detects endogenous levels of PABP5 protein.

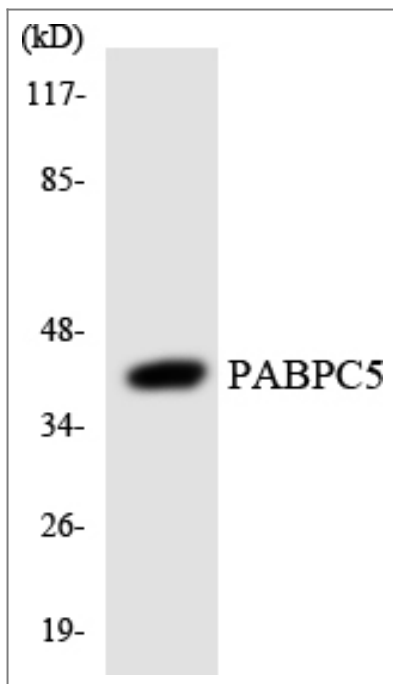
### Target Information

Gene name	PABPC5		
Protein Name	Polyadenylate-binding protein 5		
	Organism	Gene ID	UniProt ID
	Human	<a href="#">140886</a> ;	<a href="#">Q96DU9</a> ;
Cellular Localization	Cytoplasm .; [Isoform 2]: Mitochondrion matrix . Co-fractionates with mtDNA and co-immunoprecipitates with the mitochondrial poly(A) polymerase.		
Tissue specificity	Expressed in fetal brain and in a range of adult tissues.		
Function	Function: Binds the poly(A) tail of mRNA. May be involved in cytoplasmic regulatory processes of mRNA metabolism. Can probably bind to cytoplasmic RNA sequences other than poly(A) in vivo., similarity: Contains 4 RRM (RNA recognition motif) domains., tissue specificity: Expressed in fetal brain and in a range of adult tissues.,		

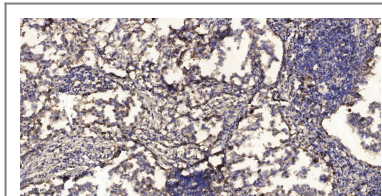
Validation Data



Western blot analysis of lysates from K562 cells, using PABPC5 Antibody. The lane on the right is blocked with the synthesized peptide.



Western blot analysis of the lysates from HeLa cells using PABPC5 antibody.



Immunohistochemical analysis of paraffin-embedded human Squamous cell carcinoma of lung. 1, Antibody was diluted at 1:200(4° overnight). 2, Tris-EDTA,pH9.0 was used for antigen retrieval. 3,Secondary antibody was diluted at 1:200(room temperature, 45min).

## Contact information

Orders: [order@immunoway.com](mailto:order@immunoway.com)  
 Support: [tech@immunoway.com](mailto:tech@immunoway.com)  
 Telephone: 877-594-3616 (Toll Free), 408-747-0185  
 Website: <http://www.immunoway.com>  
 Address: 2200 Ringwood Ave San Jose, CA 95131 USA



Please scan the QR code to access additional product information:  
**PABP5 Rabbit pAb**

For Research Use Only. Not for Use in Diagnostic Procedures.

[Antibody](#) | [ELISA Kits](#) | [Protein](#) | [Reagents](#)