

## p164-RhoGEF Rabbit pAb

CatalogNo: YT3494

### | Key Features

#### Host Species

- Rabbit

#### Reactivity

- Human, Mouse

#### Applications

- IHC, IF, ELISA

#### MW

- 222kD (Calculated)

#### Isotype

- IgG

### | Recommended Dilution Ratios

**IHC 1:100-1:300**

**IF 1:200-1:1000**

**ELISA 1:5000**

**Not yet tested in other applications.**

### | Storage

#### Storage\*

-15°C to -25°C/1 year (Do not lower than -25°C)

#### Formulation

Liquid in PBS containing 50% glycerol, 0.5% BSA and 0.02% sodium azide.

### | Basic Information

#### Clonality

Polyclonal

### | Immunogen Information

#### Immunogen

The antiserum was produced against synthesized peptide derived from human ARHGEF17. AA range: 431-480

#### Specificity

p164-RhoGEF Polyclonal Antibody detects endogenous levels of p164-RhoGEF protein.

### | Target Information

**Gene name** ARHGEF17

**Protein Name** Rho guanine nucleotide exchange factor 17

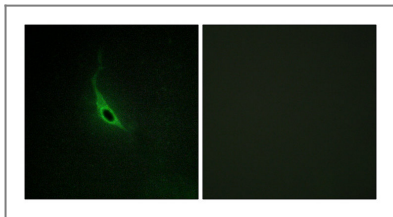
Organism	Gene ID	UniProt ID
Human	<a href="#">9828</a> ;	<a href="#">Q96PE2</a> ;
Mouse	<a href="#">207212</a> ;	<a href="#">Q80U35</a> ;

**Cellular Localization** cytosol,

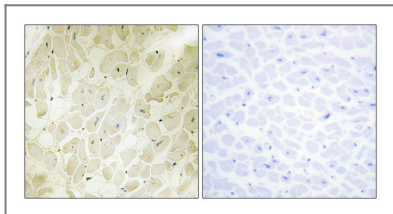
**Tissue specificity** Highly expressed in the heart.

**Function** Function:Acts as guanine nucleotide exchange factor (GEF) for RhoA GTPases.,similarity:Contains 1 DH (DBL-homology) domain.,tissue specificity:Highly expressed in the heart.,

## Validation Data



Immunofluorescence analysis of HepG2 cells, using CARD6 Antibody diluted at 1:50. The picture on the right is blocked with the synthesized peptide.



Immunohistochemical analysis of paraffin-human heart. 1, Antibody was diluted at 1:200(4° overnight). 2, TRIS-EDTA of pH8.0 was used for antigen retrieval. 3,Secondary antibody was diluted at 1:200(room temperature, 30min). The picture on the right is blocked with the synthesized peptide.

## Contact information

Orders: [order@immunoway.com](mailto:order@immunoway.com)  
Support: [tech@immunoway.com](mailto:tech@immunoway.com)  
Telephone: 877-594-3616 (Toll Free), 408-747-0185  
Website: <http://www.immunoway.com>  
Address: 2200 Ringwood Ave San Jose, CA 95131 USA



Please scan the QR code to access additional product information:  
**p164-RhoGEF**  
**Rabbit pAb**