

p15 Rabbit pAb

CatalogNo: YT3492

Orthogonal Validated 

Key Features

Host Species

- Rabbit

Reactivity

- Human, Mouse, Rat

Applications

- WB, IHC, IF, ELISA

MW

- 14kD (Observed)

Isotype

- IgG

Recommended Dilution Ratios

WB 1:500-1:2000**IHC 1:100-1:300****IF 1:200-1:1000****ELISA 1:40000****Not yet tested in other applications.**

Storage

Storage*

-15°C to -25°C/1 year (Do not lower than -25°C)

Formulation

Liquid in PBS containing 50% glycerol, 0.5% BSA and 0.02% sodium azide.

Basic Information

Clonality

Polyclonal

Immunogen Information

Immunogen

The antiserum was produced against synthesized peptide derived from human p15 INK. AA range: 89-138

Specificity

p15 Polyclonal Antibody detects endogenous levels of p15 protein.

| Target Information

Gene name CDKN2B

Protein Name Cyclin-dependent kinase 4 inhibitor B

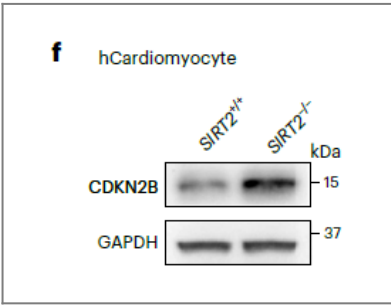
Organism	Gene ID	UniProt ID
Human	1030;	P42772;
Mouse	12579;	P55271;
Rat	25164;	P55272;

Cellular Localization Cytoplasm . Also found in the nucleus.

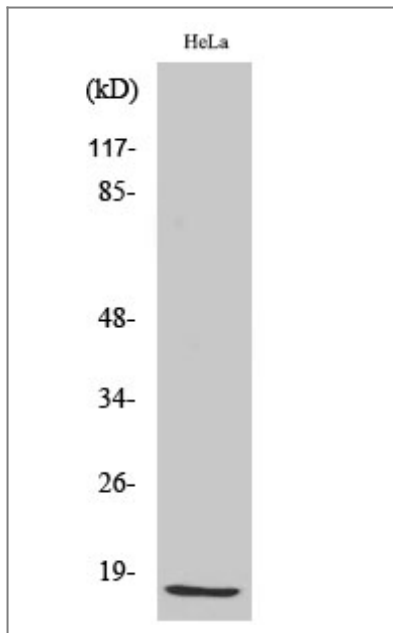
Tissue specificity Isoform 2 is expressed in normal (keratinocytes, fibroblasts) and tumor cell lines.

Function Disease:Defects in CDKN2B are involved in tumor formation.,Function:Interacts strongly with CDK4 and CDK6. Potent inhibitor. Potential effector of TGF-beta induced cell cycle arrest.,polymorphism:Genetic variations in CDKN2B may underlie susceptibility to uveal melanoma [MIM:155720]. Uveal melanoma is the most common type of ocular malignant tumor, consisting of overgrowth of uveal melanocytes and often preceded by a uveal nevus.,similarity:Belongs to the CDKN2 cyclin-dependent kinase inhibitor family.,similarity:Contains 4 ANK repeats.,subunit:Heterodimer of CDKN2B with CDK4 or CDK6.,

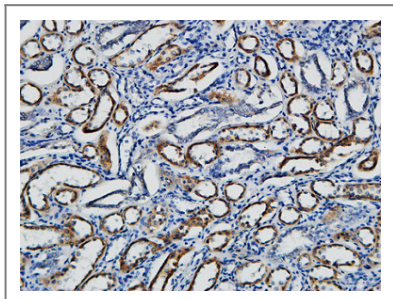
| Validation Data



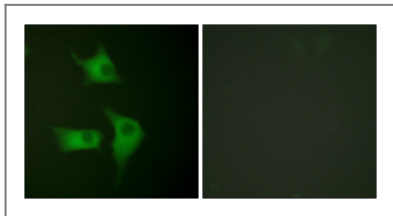
SIRT2 counteracts primate cardiac aging via deacetylation of STAT3 that silences CDKN2B. Nature Aging Guang-Hui Liu WB Mouse,Human 1:3000 hearts cardiomyocytes



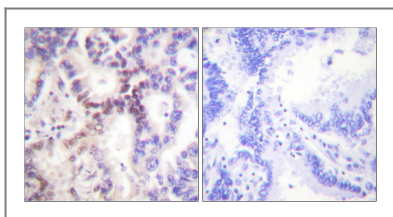
Western Blot analysis of various cells using p15 Polyclonal Antibody diluted at 1:500



Immunohistochemical analysis of paraffin-embedded Human Right kidney. 1, Antibody was diluted at 1:100(4° overnight). 2, High-pressure and temperature EDTA, pH8.0 was used for antigen retrieval. 3, Secondary antibody was diluted at 1:200(room temperature, 30min).



Immunofluorescence analysis of HeLa cells, using p15 INK Antibody. The picture on the right is blocked with the synthesized peptide.



Immunohistochemistry analysis of paraffin-embedded human lung carcinoma tissue, using p15 INK Antibody. The picture on the right is blocked with the synthesized peptide.

| Contact information

Orders: order@immunoway.com
Support: tech@immunoway.com
Telephone: 877-594-3616 (Toll Free), 408-747-0185
Website: <http://www.immunoway.com>
Address: 2200 Ringwood Ave San Jose, CA 95131 USA



Please scan the QR code
to access additional
product information:
p15 Rabbit pAb

