

## OTUD2 Rabbit pAb

CatalogNo: YT3476

### | Key Features

#### Host Species

- Rabbit

#### Reactivity

- Human,Rat,Mouse,

#### Applications

- WB,ELISA

#### MW

- 35kD (Observed)

#### Isotype

- IgG

### | Recommended Dilution Ratios

**WB 1:500-1:2000**

**ELISA 1:10000**

**Not yet tested in other applications.**

### | Storage

#### Storage\*

-15°C to -25°C/1 year(Do not lower than -25°C)

#### Formulation

Liquid in PBS containing 50% glycerol, 0.5% BSA and 0.02% sodium azide.

### | Basic Information

#### Clonality

Polyclonal

### | Immunogen Information

#### Immunogen

The antiserum was produced against synthesized peptide derived from human YOD1. AA range:116-165

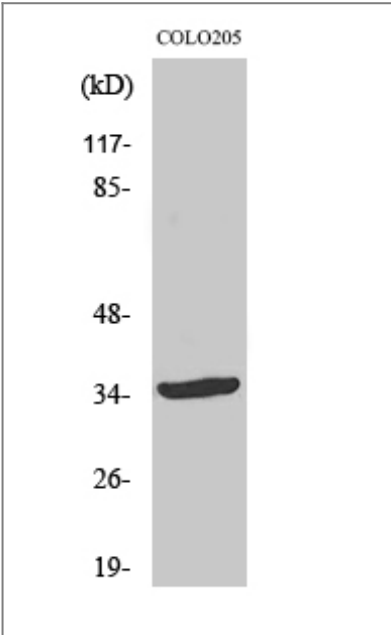
#### Specificity

OTUD2 Polyclonal Antibody detects endogenous levels of OTUD2 protein.

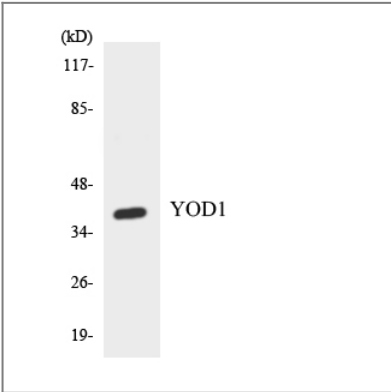
### | Target Information

|                       |   |                         |                          |
|-----------------------|---|-------------------------|--------------------------|
| Gene name             | YOD1  |                         |                          |
| Protein Name          | Ubiquitin thioesterase OTU1   |                         |                          |
|                       | Organism  | Gene ID                 | UniProt ID               |
|                       | Human   | <a href="#">55432</a> ; | <a href="#">Q5VVQ6</a> ; |
|                       | Mouse   |                         | <a href="#">Q8CB27</a> ; |
| Cellular Localization | Cytoplasm . Recruited to damaged lysosomes decorated with K48-linked ubiquitin chains. .  |                         |                          |
| Tissue specificity    | Fetal liver,Spinal cord,Testis,   |                         |                          |
| Function              | Function:Hydrolase that can remove conjugated ubiquitin from proteins and may therefore play an important regulatory role at the level of protein turnover by preventing degradation.,sequence Caution:Wrong choice of frame.,similarity:Contains 1 C2H2-type zinc finger.,similarity:Contains 1 OTU domain., |                         |                          |

| Validation Data



Western Blot analysis of various cells using OTUD2 Polyclonal Antibody



Western blot analysis of the lysates from HT-29 cells using YOD1 antibody.

## | Contact information

Orders: order@immunoway.com  
Support: tech@immunoway.com  
Telephone: 877-594-3616 (Toll Free), 408-747-0185  
Website: <http://www.immunoway.com>  
Address: 2200 Ringwood Ave San Jose, CA 95131 USA



Please scan the QR code  
to access additional  
product information:  
**OTUD2 Rabbit pAb**

---

For Research Use Only. Not for Use in Diagnostic Procedures.

[Antibody](#) | [ELISA Kits](#) | [Protein](#) | [Reagents](#)