

OTUB2 Rabbit pAb

CatalogNo: YT3475

Key Features

Host Species

- Rabbit

Reactivity

- Human, Mouse, Rat

Applications

- WB, IHC, IF, ELISA

MW

- 27kD (Observed)

Isotype

- IgG

Recommended Dilution Ratios

WB 1:500-1:2000

IHC 1:100-1:300

ELISA 1:20000

IF 1:50-200

Storage

Storage*

-15°C to -25°C/1 year (Do not lower than -25°C)

Formulation

Liquid in PBS containing 50% glycerol, 0.5% BSA and 0.02% sodium azide.

Basic Information

Clonality

Polyclonal

Immunogen Information

Immunogen

The antiserum was produced against synthesized peptide derived from human OTUB2. AA range:133-182

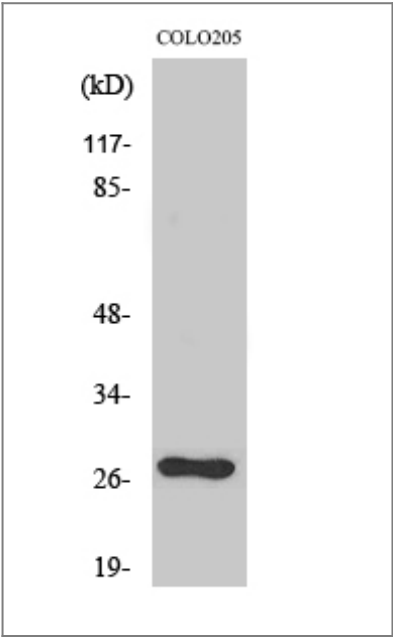
Specificity

OTUB2 Polyclonal Antibody detects endogenous levels of OTUB2 protein.

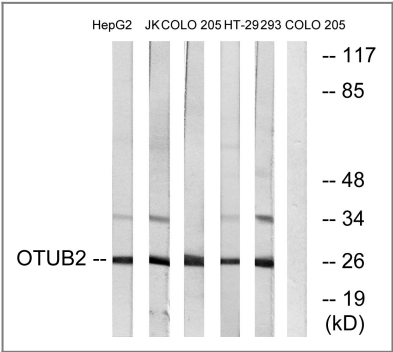
Target Information

Gene name	OTUB2		
Protein Name	Ubiquitin thioesterase OTUB2		
	Organism	Gene ID	UniProt ID
	Human	78990 ;	Q96DC9 ;
	Mouse	68149 ;	Q9CQX0 ;
Cellular Localization	nucleus,		
Tissue specificity	Widely expressed. Expressed at higher level in brain.		
Function	Function:Hydrolase that can remove conjugated ubiquitin from proteins in vitro and may therefore play an important regulatory role at the level of protein turnover by preventing degradation.,similarity:Belongs to the peptidase C65 family.,similarity:Contains 1 OTU domain.,tissue specificity:Widely expressed. Expressed at higher level in brain.,		

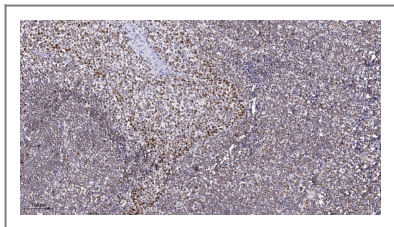
| Validation Data



Western Blot analysis of various cells using OTUB2 Polyclonal Antibody diluted at 1:2000



Western blot analysis of lysates from COLO, HepG2, Jurkat, 293, and HT-29 cells, using OTUB2 Antibody. The lane on the right is blocked with the synthesized peptide.



Immunohistochemical analysis of paraffin-embedded human tonsil. 1, Antibody was diluted at 1:200(4° overnight). 2, Tris-EDTA,pH9.0 was used for antigen retrieval. 3,Secondary antibody was diluted at 1:200(room temperature, 45min).

| Contact information

Orders: order@immunoway.com
Support: tech@immunoway.com
Telephone: 877-594-3616 (Toll Free), 408-747-0185
Website: <http://www.immunoway.com>
Address: 2200 Ringwood Ave San Jose, CA 95131 USA



Please scan the QR code
to access additional
product information:
OTUB2 Rabbit pAb

For Research Use Only. Not for Use in Diagnostic Procedures.

[Antibody](#) | [ELISA Kits](#) | [Protein](#) | [Reagents](#)