

Orexin R-1 Rabbit pAb

CatalogNo: YT3471

| Key Features

Host Species

- Rabbit

Reactivity

- Human, Mouse, Rat

Applications

- WB, ELISA

MW

- 50kD (Observed)

Isotype

- IgG

| Recommended Dilution Ratios

WB 1:500-1:2000

ELISA 1:5000

Not yet tested in other applications.

| Storage

Storage*

-15°C to -25°C/1 year (Do not lower than -25°C)

Formulation

Liquid in PBS containing 50% glycerol, 0.5% BSA and 0.02% sodium azide.

| Basic Information

Clonality

Polyclonal

| Immunogen Information

Immunogen

The antiserum was produced against synthesized peptide derived from human HCRT1. AA range: 231-280

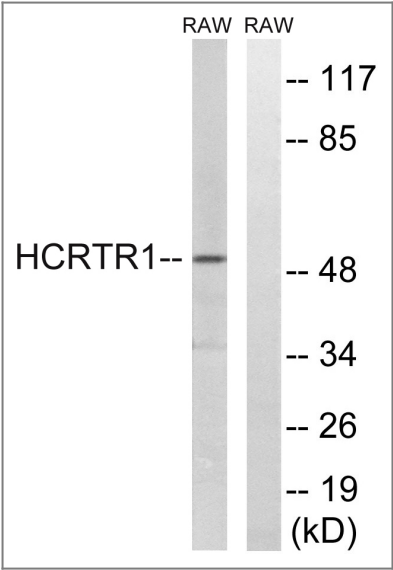
Specificity

Orexin R-1 Polyclonal Antibody detects endogenous levels of Orexin R-1 protein.

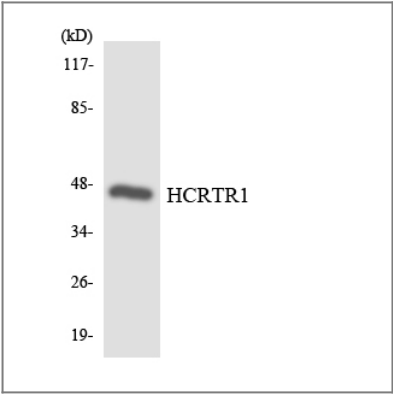
| Target Information

Gene name	HCRTR1		
Protein Name	Orexin receptor type 1		
	Organism	Gene ID	UniProt ID
	Human	3061 ;	O43613 ;
	Mouse	230777 ;	P58307 ;
	Rat	25593 ;	P56718 ;
Cellular Localization	Cell membrane ; Multi-pass membrane protein .		
Tissue specificity	Brain,		
Function	Function:Moderately selective excitatory receptor for orexin-A and, with a lower affinity, for orexin-B neuropeptide. Seems to be exclusively coupled to the G(q) subclass of heteromeric G proteins, which activates the phospholipase C mediated signaling cascade.,similarity:Belongs to the G-protein coupled receptor 1 family.,		

| Validation Data



Western blot analysis of lysates from RAW264.7 cells, using HCRTR1 Antibody. The lane on the right is blocked with the synthesized peptide.



Western blot analysis of the lysates from HepG2 cells using HCRTR1 antibody.

| Contact information

Orders: order@immunoway.com
Support: tech@immunoway.com
Telephone: 877-594-3616 (Toll Free), 408-747-0185
Website: <http://www.immunoway.com>
Address: 2200 Ringwood Ave San Jose, CA 95131 USA



Please scan the QR code
to access additional
product information:
**Orexin R-1 Rabbit
pAb**

For Research Use Only. Not for Use in Diagnostic Procedures.

[Antibody](#) | [ELISA Kits](#) | [Protein](#) | [Reagents](#)