

## ORCTL2 Rabbit pAb

CatalogNo: YT3470

### Key Features

#### Host Species

- Rabbit

#### Reactivity

- Human,Rat,Mouse,

#### Applications

- WB,IF,ELISA

#### MW

- 43kD (Observed)

#### Isotype

- IgG

### Recommended Dilution Ratios

**WB 1:500-1:2000**

**IF 1:200-1:1000**

**ELISA 1:10000**

**Not yet tested in other applications.**

### Storage

#### Storage\*

-15°C to -25°C/1 year(Do not lower than -25°C)

#### Formulation

Liquid in PBS containing 50% glycerol, 0.5% BSA and 0.02% sodium azide.

### Basic Information

#### Clonality

Polyclonal

### Immunogen Information

#### Immunogen

The antiserum was produced against synthesized peptide derived from human ORCTL-2.  
AA range:359-408

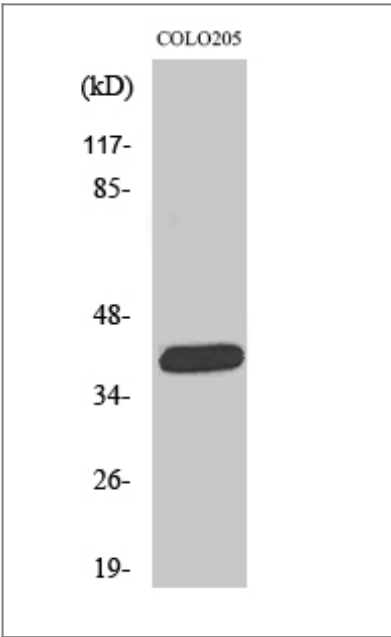
#### Specificity

ORCTL2 Polyclonal Antibody detects endogenous levels of ORCTL2 protein.

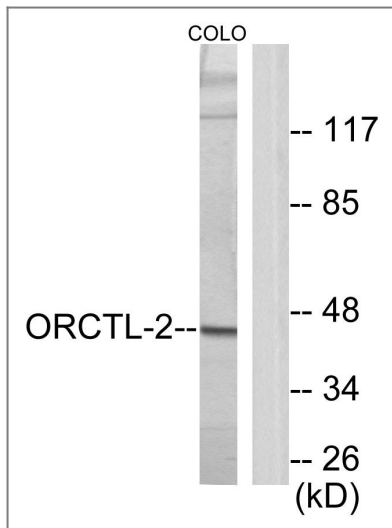
### Target Information

Gene name	SLC22A18		
Protein Name	Solute carrier family 22 member 18		
	Organism	Gene ID	UniProt ID
	Human	<a href="#">5002</a> ;	<a href="#">Q96BI1</a> ;
	Mouse		<a href="#">Q78KK3</a> ;
Cellular Localization	Apical cell membrane ; Multi-pass membrane protein . Localized at the apical membrane surface of renal proximal tubules. .		
Tissue specificity	Expressed at high levels in adult and fetal kidney and liver, and adult colon. Expressed in fetal renal proximal tubules (at protein level). Expressed at lower levels in heart, brain and lung.		
Function	Caution:It is uncertain whether Met-1 or Met-17 is the initiator.,Disease:Defects in SLC22A18 are associated with breast cancer [MIM:114480].,Disease:Defects in SLC22A18 are associated with lung cancer [MIM:211980].,Disease:Defects in SLC22A18 are the cause of rhabdomyosarcoma type 1 (RMS1) [MIM:268210]. Rhabdomyosarcoma is a malignant tumor (sarcoma) derived from striated muscle.,Function:May act as a transporter of organic cations based on a proton efflux antiport mechanism. May play a role in the transport of chloroquine and quinidine-related compounds in kidney.,similarity:Belongs to the major facilitator superfamily. Organic cation transporter family.,subcellular location:Localized at the apical membrane surface of renal proximal tubules.,subunit:Interacts with RNF167.,tissue specificity:Expressed at high levels in adult and fetal kidney and liver, and adult colon. Expressed in fetal renal proximal tubules (at protein level). Expressed at lower levels in heart, brain and lung.,		

## | Validation Data



Western Blot analysis of various cells using ORCTL2 Polyclonal Antibody



Western blot analysis of lysates from COLO205 cells, using ORCTL-2 Antibody. The lane on the right is blocked with the synthesized peptide.

## Contact information

Orders: [order@immunoway.com](mailto:order@immunoway.com)  
 Support: [tech@immunoway.com](mailto:tech@immunoway.com)  
 Telephone: 877-594-3616 (Toll Free), 408-747-0185  
 Website: <http://www.immunoway.com>  
 Address: 2200 Ringwood Ave San Jose, CA 95131 USA



Please scan the QR code to access additional product information:  
**ORCTL2 Rabbit pAb**

For Research Use Only. Not for Use in Diagnostic Procedures.

[Antibody](#) | [ELISA Kits](#) | [Protein](#) | [Reagents](#)