

## ORC1 Rabbit pAb

CatalogNo: YT3469

### | Key Features

#### Host Species

- Rabbit

#### Reactivity

- Human,Rat,Mouse,

#### Applications

- WB,ELISA

#### MW

- 100,120kD (Observed)

#### Isotype

- IgG

### | Recommended Dilution Ratios

**WB 1:500-1:2000**

**ELISA 1:5000**

**Not yet tested in other applications.**

### | Storage

#### Storage\*

-15°C to -25°C/1 year(Do not lower than -25°C)

#### Formulation

Liquid in PBS containing 50% glycerol, 0.5% BSA and 0.02% sodium azide.

### | Basic Information

#### Clonality

Polyclonal

### | Immunogen Information

#### Immunogen

The antiserum was produced against synthesized peptide derived from human ORC1L. AA range:331-380

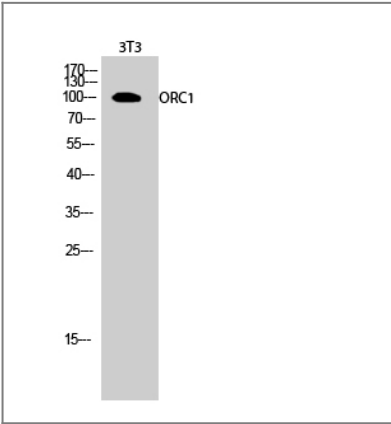
#### Specificity

ORC1 Polyclonal Antibody detects endogenous levels of ORC1 protein.

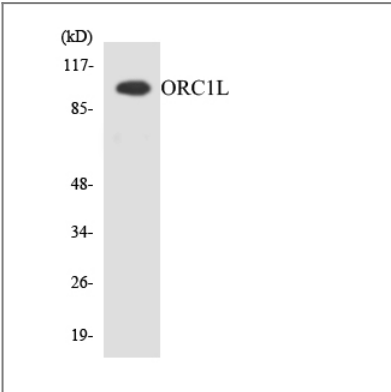
### | Target Information

Gene name	ORC1		
Protein Name	Origin recognition complex subunit 1		
	Organism	Gene ID	UniProt ID
	Human	<a href="#">4998</a> ;	<a href="#">Q13415</a> ;
	Mouse		<a href="#">Q9Z1N2</a> ;
Cellular Localization	Nucleus.		
Tissue specificity	Epithelium, Eye,		
Function	Function:Component of the origin recognition complex (ORC) that binds origins of replication. It has a role in both chromosomal replication and mating type transcriptional silencing. Binds to the ARS consensus sequence (ACS) of origins of replication in an ATP-dependent manner.,similarity:Belongs to the ORC1 family.,similarity:Contains 1 BAH domain.,subunit:ORC is composed of six subunits. Interacts with CDC6 and MYST2/HBO1.,		

| Validation Data



Western Blot analysis of 3T3 cells using ORC1 Polyclonal Antibody



Western blot analysis of the lysates from HepG2 cells using ORC1L antibody.

| Contact information

Orders: order@immunoway.com  
Support: tech@immunoway.com  
Telephone: 877-594-3616 (Toll Free), 408-747-0185  
Website: http://www.immunoway.com  
Address: 2200 Ringwood Ave San Jose, CA 95131 USA



Please scan the QR code  
to access additional  
product information:  
**ORC1 Rabbit pAb**

---

For Research Use Only. Not for Use in Diagnostic Procedures.

[Antibody](#) | [ELISA Kits](#) | [Protein](#) | [Reagents](#)