

ORAOV1 Rabbit pAb

CatalogNo: YT3468

Key Features

Host Species

- Rabbit

Reactivity

- Human, Mouse

Applications

- WB, IHC, IF, ELISA

MW

- 15kD (Observed)

Isotype

- IgG

Recommended Dilution Ratios

WB 1:500-1:2000

IHC 1:100-1:300

IF 1:200-1:1000

ELISA 1:10000

Not yet tested in other applications.

Storage

Storage*

-15°C to -25°C/1 year (Do not lower than -25°C)

Formulation

Liquid in PBS containing 50% glycerol, 0.5% BSA and 0.02% sodium azide.

Basic Information

Clonality

Polyclonal

Immunogen Information

Immunogen

The antiserum was produced against synthesized peptide derived from human ORAV1. AA range: 81-130

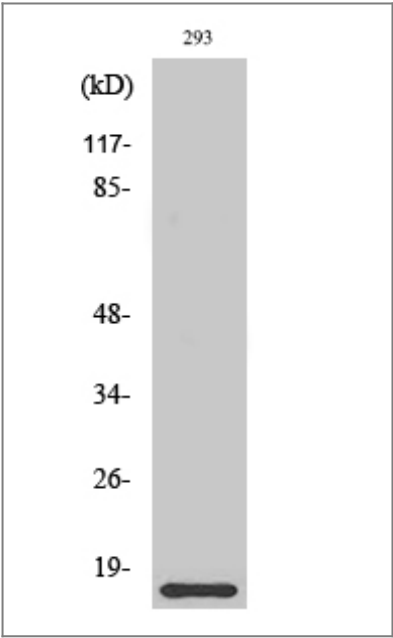
Specificity

ORAOV1 Polyclonal Antibody detects endogenous levels of ORAOV1 protein.

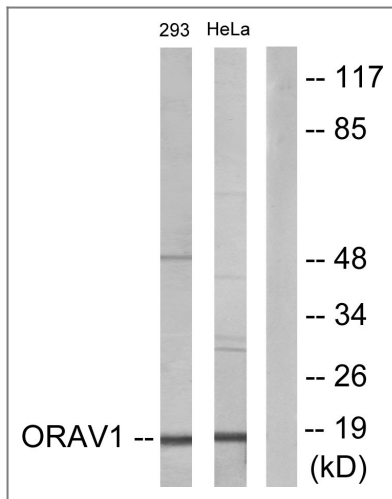
| Target Information

Gene name	ORAOV1		
Protein Name	Oral cancer-overexpressed protein 1		
	Organism	Gene ID	UniProt ID
	Human	220064 ;	Q8WV07 ;
	Mouse		Q8CH62 ;
Cellular Localization	Nucleus .		
Tissue specificity	Widely expressed. Highly expressed in placenta, kidney and skeletal muscle.		
Function	miscellaneous:Amplified and overexpressed in oral cancer cells.,similarity:Belongs to the ORAOV1 family.,tissue specificity:Widely expressed. Highly expressed in placenta, kidney and skeletal muscle.,		

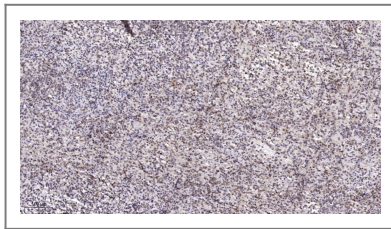
| Validation Data



Western Blot analysis of various cells using ORAOV1 Polyclonal Antibody diluted at 1:2000



Western blot analysis of lysates from 293 and HeLa cells, using ORAV1 Antibody. The lane on the right is blocked with the synthesized peptide.



Immunohistochemical analysis of paraffin-embedded human spleen. 1, Antibody was diluted at 1:200(4° overnight). 2, Tris-EDTA,pH9.0 was used for antigen retrieval. 3,Secondary antibody was diluted at 1:200(room temperature, 45min).

Contact information

Orders: order@immunoway.com
 Support: tech@immunoway.com
 Telephone: 877-594-3616 (Toll Free), 408-747-0185
 Website: <http://www.immunoway.com>
 Address: 2200 Ringwood Ave San Jose, CA 95131 USA



Please scan the QR code to access additional product information:
ORAV1 Rabbit pAb

For Research Use Only. Not for Use in Diagnostic Procedures.

[Antibody](#) | [ELISA Kits](#) | [Protein](#) | [Reagents](#)