

Oncogene TIM Rabbit pAb

CatalogNo: YT3461

Key Features

Host Species

- Rabbit

Reactivity

- Human, Mouse, Rat

Applications

- WB, ELISA

MW

- 60kD (Observed)

Isotype

- IgG

Storage

Storage* -15°C to -25°C/1 year (Do not lower than -25°C)

Formulation Liquid in PBS containing 50% glycerol, 0.5% BSA and 0.02% sodium azide.

Recommended Dilution Ratios

WB 1:500-1:2000

ELISA 1:20000

Not yet tested in other applications.

Basic Information

Clonality Polyclonal

Immunogen Information

Immunogen The antiserum was produced against synthesized peptide derived from human ARHGEF5. AA range:1280-1330

Specificity Oncogene TIM Polyclonal Antibody detects endogenous levels of Oncogene TIM protein.

Target Information

Gene name ARHGEF5

Protein Name Rho guanine nucleotide exchange factor 5

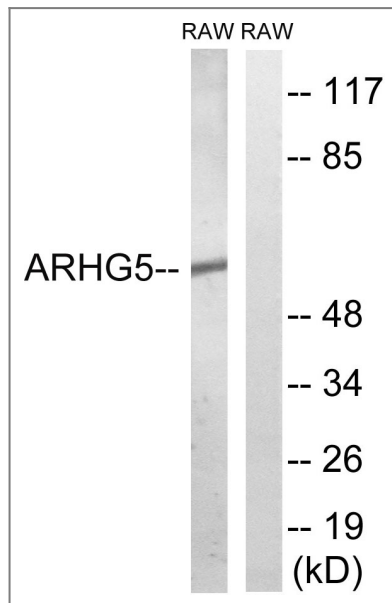
Organism	Gene ID	UniProt ID
Human	7984;	Q12774;

Cellular Localization Cytoplasm . Nucleus . Cell projection, podosome .

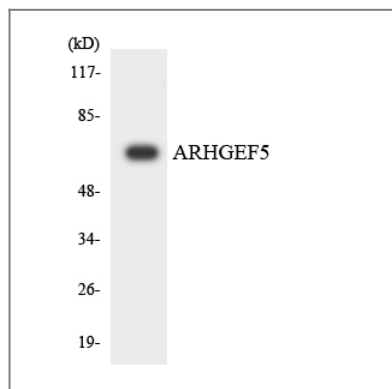
Tissue specificity Ubiquitously expressed with highest levels in placenta. High levels are also found in colon, kidney, trachea, prostate, liver, pancreas, pituitary gland, thyroid gland and mammary gland. In fetal tissues, expressed at high levels in kidney, lung and liver (PubMed:15601624). Expressed at low levels in lung and heart (PubMed:14662653).

Function similarity:Contains 1 DH (DBL-homology) domain.,similarity:Contains 1 PH domain.,similarity:Contains 1 SH3 domain.,tissue specificity:Mainly expressed in kidney, liver, pancreas, lung and placenta.,

Validation Data



Western blot analysis of lysates from RAW264.7 cells, using ARHGEF5 Antibody. The lane on the right is blocked with the synthesized peptide.



Western blot analysis of the lysates from K562 cells using ARHGEF5 antibody.

| Contact information

Orders: order@immunoway.com
Support: tech@immunoway.com
Telephone: 877-594-3616 (Toll Free), 408-747-0185
Website: <http://www.immunoway.com>
Address: 2200 Ringwood Ave San Jose, CA 95131 USA



Please scan the QR code
to access additional
product information:
Oncogene TIM
Rabbit pAb

For Research Use Only. Not for Use in Diagnostic Procedures.

[Antibody](#) | [ELISA Kits](#) | [Protein](#) | [Reagents](#)