

## Olfactory receptor O13C2/9 Rabbit pAb

CatalogNo: YT3459

### Key Features

#### Host Species

- Rabbit

#### Reactivity

- Human

#### Applications

- WB,IF,ELISA

#### MW

- 36kD (Observed)

#### Isotype

- IgG

### Storage

**Storage\*** -15°C to -25°C/1 year(Do not lower than -25°C)

**Formulation** Liquid in PBS containing 50% glycerol, 0.5% BSA and 0.02% sodium azide.

### Recommended Dilution Ratios

**WB 1:500-1:2000**

**IF 1:200-1:1000**

**ELISA 1:20000**

**Not yet tested in other applications.**

### Basic Information

**Clonality** Polyclonal

### Immunogen Information

**Immunogen** The antiserum was produced against synthesized peptide derived from human OR13C2/13C9. AA range:232-281

**Specificity** Olfactory receptor O13C2/9 Polyclonal Antibody detects endogenous levels of Olfactory receptor O13C2/9 protein.

## Target Information

**Gene name** OR13C2/OR13C9

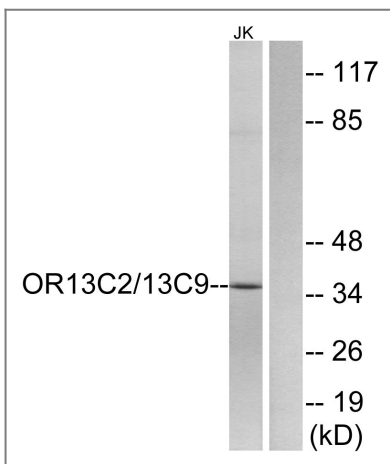
**Protein Name** Olfactory receptor 13C2/9

Organism	Gene ID	UniProt ID
Human	<a href="#">392376</a> ; <a href="#">286362</a> ;	<a href="#">Q8NGS9</a> ; <a href="#">Q8NGT0</a> ;

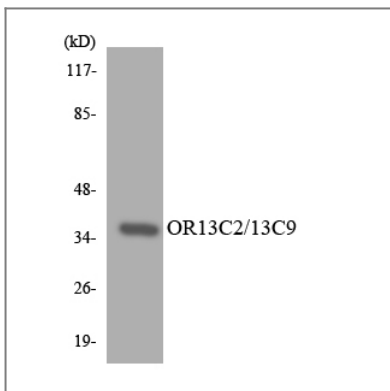
**Cellular Localization** Cell membrane; Multi-pass membrane protein.

**Function** Function:Odorant receptor .,similarity:Belongs to the G-protein coupled receptor 1 family.,

## Validation Data



Western blot analysis of lysates from Jurkat cells, using OR13C2/13C9 Antibody. The lane on the right is blocked with the synthesized peptide.



Western blot analysis of the lysates from K562 cells using OR13C2/13C9 antibody.

## Contact information

Orders: order@immunoway.com  
Support: tech@immunoway.com  
Telephone: 877-594-3616 (Toll Free), 408-747-0185  
Website: http://www.immunoway.com  
Address: 2200 Ringwood Ave San Jose, CA 95131 USA



Please scan the QR code  
to access additional  
product information:  
**Olfactory receptor  
O13C2/9 Rabbit pAb**

---

For Research Use Only. Not for Use in Diagnostic Procedures.

[Antibody](#) | [ELISA Kits](#) | [Protein](#) | [Reagents](#)