

## Olfactory receptor 9G1 Rabbit pAb

CatalogNo: YT3455

### Key Features

#### Host Species

- Rabbit

#### Reactivity

- Human

#### Applications

- WB,IF,ELISA

#### MW

- 30kD (Observed)

#### Isotype

- IgG

### Recommended Dilution Ratios

**WB 1:500-1:2000**

**IF 1:200-1:1000**

**ELISA 1:10000**

**Not yet tested in other applications.**

### Storage

#### Storage\*

-15°C to -25°C/1 year(Do not lower than -25°C)

#### Formulation

Liquid in PBS containing 50% glycerol, 0.5% BSA and 0.02% sodium azide.

### Basic Information

#### Clonality

Polyclonal

### Immunogen Information

#### Immunogen

The antiserum was produced against synthesized peptide derived from human OR9G1. AA range:158-207

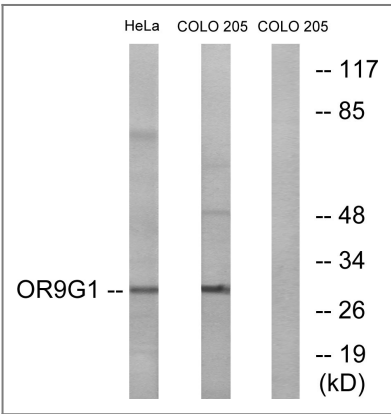
#### Specificity

Olfactory receptor 9G1 Polyclonal Antibody detects endogenous levels of Olfactory receptor 9G1 protein.

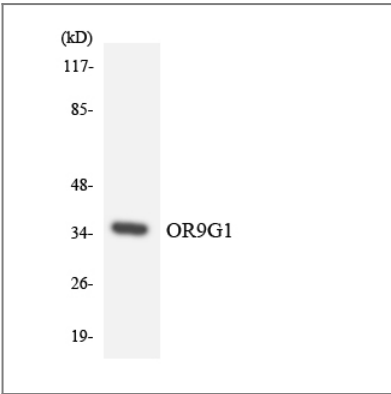
## Target Information

Gene name	OR9G1		
Protein Name	Olfactory receptor 9G1		
	Organism	Gene ID	UniProt ID
	Human	<a href="#">390174</a> ; <a href="#">390174</a> ;	<a href="#">Q8NH87</a> ; <a href="#">Q8NGQ0</a> ; <a href="#">Q6IEV0</a> ;
Cellular Localization	Cell membrane; Multi-pass membrane protein.		
Function	Function:Odorant receptor .,miscellaneous:The sequence shown here is derived from an EMBL/GenBank/DDBJ third party annotation (TPA) entry.,similarity:Belongs to the G-protein coupled receptor 1 family.,		

## Validation Data



Western blot analysis of lysates from HeLa and COLO cells, using OR9G1 Antibody. The lane on the right is blocked with the synthesized peptide.



Western blot analysis of the lysates from HeLa cells using OR9G1 antibody.

## Contact information

Orders: order@immunoway.com  
Support: tech@immunoway.com  
Telephone: 877-594-3616 (Toll Free), 408-747-0185  
Website: http://www.immunoway.com  
Address: 2200 Ringwood Ave San Jose, CA 95131 USA



Please scan the QR code  
to access additional  
product information:  
**Olfactory receptor  
9G1 Rabbit pAb**

---

For Research Use Only. Not for Use in Diagnostic Procedures.

[Antibody](#) | [ELISA Kits](#) | [Protein](#) | [Reagents](#)