

# Olfactory receptor 9A2 Rabbit pAb

CatalogNo: YT3454

## Key Features

### Host Species

- Rabbit

### Reactivity

- Human

### Applications

- WB, ELISA

### MW

- 35kD (Observed)

### Isotype

- IgG

## Storage

**Storage\*** -15°C to -25°C/1 year (Do not lower than -25°C)

**Formulation** Liquid in PBS containing 50% glycerol, 0.5% BSA and 0.02% sodium azide.

## Recommended Dilution Ratios

**WB 1:500-1:2000**

**ELISA 1:20000**

**Not yet tested in other applications.**

## Basic Information

**Clonality** Polyclonal

## Immunogen Information

**Immunogen** The antiserum was produced against synthesized peptide derived from human OR9A2. AA range:260-309

**Specificity** Olfactory receptor 9A2 Polyclonal Antibody detects endogenous levels of Olfactory receptor 9A2 protein.

## Target Information

**Gene name** OR9A2

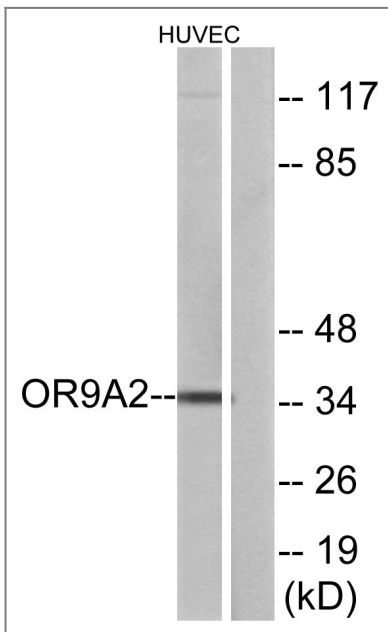
**Protein Name** Olfactory receptor 9A2

| Organism | Gene ID                 | UniProt ID              |
|----------|-------------------------|-------------------------|
| Human    | <a href="#">135924;</a> | <a href="#">Q8NGT5;</a> |

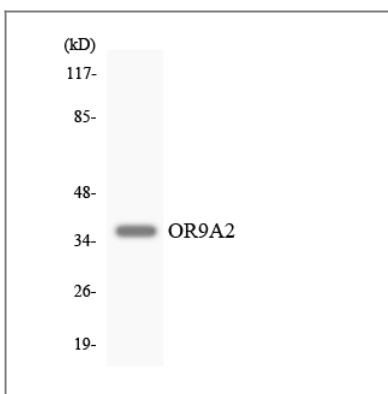
**Cellular Localization** Cell membrane; Multi-pass membrane protein.

**Function** Function:Odorant receptor .,similarity:Belongs to the G-protein coupled receptor 1 family.,

## Validation Data



Western blot analysis of lysates from HUVEC cells, using OR9A2 Antibody. The lane on the right is blocked with the synthesized peptide.



Western blot analysis of the lysates from HT-29 cells using OR9A2 antibody.

## Contact information

Orders: order@immunoway.com  
Support: tech@immunoway.com  
Telephone: 877-594-3616 (Toll Free), 408-747-0185  
Website: http://www.immunoway.com  
Address: 2200 Ringwood Ave San Jose, CA 95131 USA



Please scan the QR code  
to access additional  
product information:  
**Olfactory receptor  
9A2 Rabbit pAb**

---

For Research Use Only. Not for Use in Diagnostic Procedures.

[Antibody](#) | [ELISA Kits](#) | [Protein](#) | [Reagents](#)