

## Olfactory receptor 7E5P Rabbit pAb

CatalogNo: YT3437

### Key Features

#### Host Species

- Rabbit

#### Reactivity

- Human,Rat,Mouse,

#### Applications

- WB,IF,ELISA

#### MW

- 26kD (Observed)

#### Isotype

- IgG

### Recommended Dilution Ratios

**WB 1:500-1:2000**

**IF 1:200-1:1000**

**ELISA 1:10000**

**Not yet tested in other applications.**

### Storage

#### Storage\*

-15°C to -25°C/1 year(Do not lower than -25°C)

#### Formulation

Liquid in PBS containing 50% glycerol, 0.5% BSA and 0.02% sodium azide.

### Basic Information

#### Clonality

Polyclonal

### Immunogen Information

#### Immunogen

The antiserum was produced against synthesized peptide derived from human OR7E5P. AA range:35-84

#### Specificity

Olfactory receptor 7E5P Polyclonal Antibody detects endogenous levels of Olfactory receptor 7E5P protein.

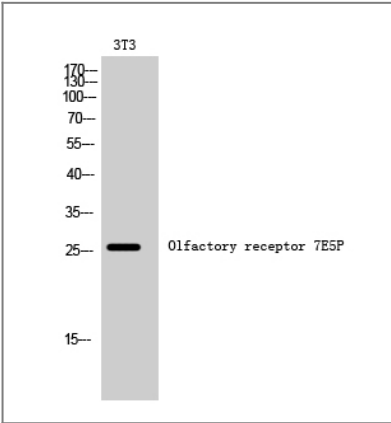
## | Target Information

**Gene name** OR7E5P

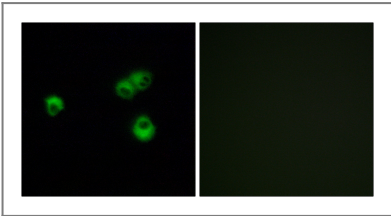
**Protein Name** Seven transmembrane helix receptor

Organism	Gene ID	UniProt ID
Human	<a href="#">219445;</a>	<a href="#">Q96N54;</a>

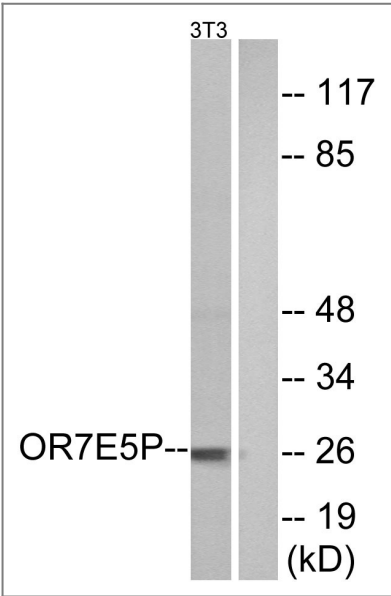
## | Validation Data



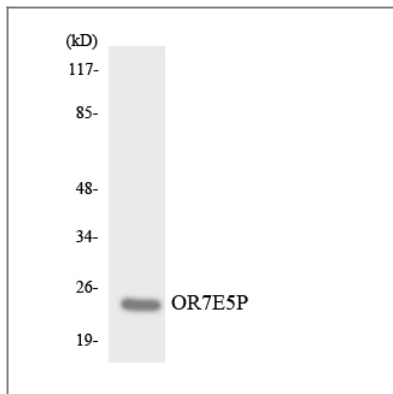
Western Blot analysis of 3T3 cells using Olfactory receptor 7E5P Polyclonal Antibody



Immunofluorescence analysis of MCF-7 cells, using OR7E5P Antibody. The picture on the right is blocked with the synthesized peptide.



Western blot analysis of lysates from NIH/3T3 cells, using OR7E5P Antibody. The lane on the right is blocked with the synthesized peptide.



Western blot analysis of the lysates from COLO205 cells using OR7E5P antibody.

## Contact information

Orders: [order@immunoway.com](mailto:order@immunoway.com)  
Support: [tech@immunoway.com](mailto:tech@immunoway.com)  
Telephone: 877-594-3616 (Toll Free), 408-747-0185  
Website: <http://www.immunoway.com>  
Address: 2200 Ringwood Ave San Jose, CA 95131 USA



Please scan the QR code to access additional product information:  
**Olfactory receptor  
7E5P Rabbit pAb**

For Research Use Only. Not for Use in Diagnostic Procedures.

[Antibody](#) | [ELISA Kits](#) | [Protein](#) | [Reagents](#)