

## Olfactory receptor 7C1 Rabbit pAb

CatalogNo: YT3435

### | Key Features

#### Host Species

- Rabbit

#### Reactivity

- Human

#### Applications

- WB,IF,ELISA

#### MW

- 34kD (Observed)

#### Isotype

- IgG

### | Recommended Dilution Ratios

**WB 1:500-1:2000**

**IF 1:200-1:1000**

**ELISA 1:20000**

**Not yet tested in other applications.**

### | Storage

#### Storage\*

-15°C to -25°C/1 year(Do not lower than -25°C)

#### Formulation

Liquid in PBS containing 50% glycerol, 0.5% BSA and 0.02% sodium azide.

### | Basic Information

#### Clonality

Polyclonal

### | Immunogen Information

#### Immunogen

The antiserum was produced against synthesized peptide derived from human OR7C1. AA range:199-248

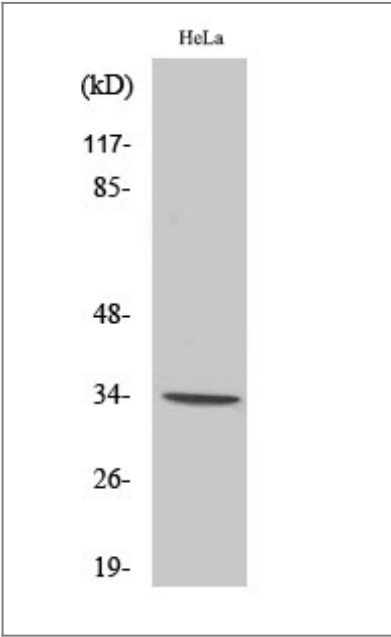
#### Specificity

Olfactory receptor 7C1 Polyclonal Antibody detects endogenous levels of Olfactory receptor 7C1 protein.

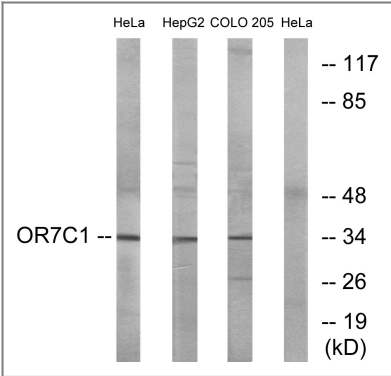
## Target Information

Gene name	OR7C1		
Protein Name	Olfactory receptor 7C1		
	Organism	Gene ID	UniProt ID
	Human	<a href="#">26664</a> ;	<a href="#">O76099</a> ;
Cellular Localization	Cell membrane; Multi-pass membrane protein.		
Tissue specificity	Pooled,Testis,		
Function	Function:Odorant receptor .,similarity:Belongs to the G-protein coupled receptor 1 family.,		

## Validation Data



Western Blot analysis of various cells using Olfactory receptor 7C1 Polyclonal Antibody diluted at 1:500



Western blot analysis of lysates from HeLa, HepG2, and COLO cells, using OR7C1 Antibody. The lane on the right is blocked with the synthesized peptide.

## | Contact information

Orders: order@immunoway.com  
Support: tech@immunoway.com  
Telephone: 877-594-3616 (Toll Free), 408-747-0185  
Website: <http://www.immunoway.com>  
Address: 2200 Ringwood Ave San Jose, CA 95131 USA



Please scan the QR code  
to access additional  
product information:

**Olfactory receptor  
7C1 Rabbit pAb**

---

For Research Use Only. Not for Use in Diagnostic Procedures.

[Antibody](#) | [ELISA Kits](#) | [Protein](#) | [Reagents](#)