

# Olfactory receptor 6Q1 Rabbit pAb

CatalogNo: YT3431

## Key Features

### Host Species

- Rabbit

### Reactivity

- Human

### Applications

- WB,IF,ELISA

### MW

- 36kD (Observed)

### Isotype

- IgG

## Storage

**Storage\*** -15°C to -25°C/1 year(Do not lower than -25°C)

**Formulation** Liquid in PBS containing 50% glycerol, 0.5% BSA and 0.02% sodium azide.

## Recommended Dilution Ratios

**WB 1:500-1:2000**

**IF 1:200-1:1000**

**ELISA 1:20000**

**Not yet tested in other applications.**

## Basic Information

**Clonality** Polyclonal

## Immunogen Information

**Immunogen** The antiserum was produced against synthesized peptide derived from human OR6Q1. AA range:23-72

**Specificity** Olfactory receptor 6Q1 Polyclonal Antibody detects endogenous levels of Olfactory receptor 6Q1 protein.

## Target Information

**Gene name** OR6Q1

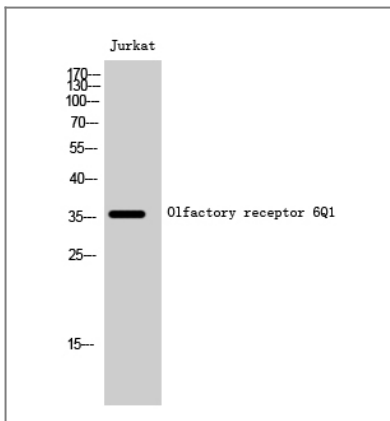
**Protein Name** Olfactory receptor 6Q1

Organism	Gene ID	UniProt ID
Human	<a href="#">219952</a> ;	<a href="#">Q8NGQ2</a> ;

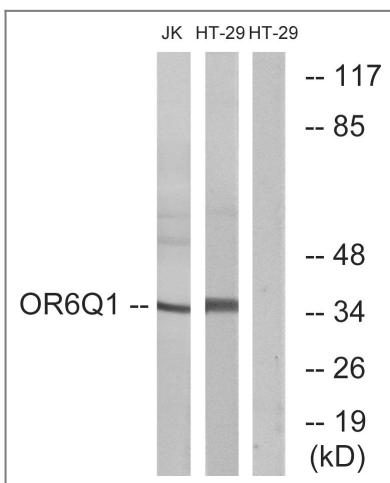
**Cellular Localization** Cell membrane; Multi-pass membrane protein.

**Function** Function:Odorant receptor .,polymorphism:A single nucleotide deletion at position Leu-229 in the gene coding for this protein is responsible for functional diversity thus producing a pseudogene. The deletion is more frequent in African-Americans than in non-Africans.,similarity:Belongs to the G-protein coupled receptor 1 family.,

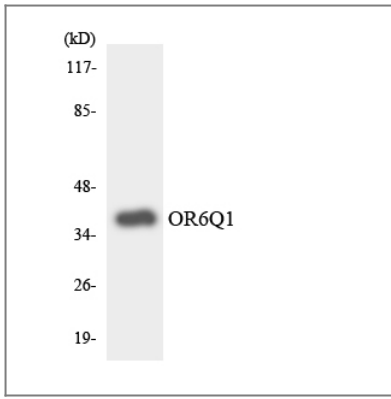
## Validation Data



Western Blot analysis of Jurkat cells using Olfactory receptor 6Q1 Polyclonal Antibody diluted at 1:1000



Western blot analysis of lysates from Jurkat and HT-29 cells, using OR6Q1 Antibody. The lane on the right is blocked with the synthesized peptide.



Western blot analysis of the lysates from HT-29 cells using OR6Q1 antibody.

## Contact information

Orders: [order@immunoway.com](mailto:order@immunoway.com)  
Support: [tech@immunoway.com](mailto:tech@immunoway.com)  
Telephone: 877-594-3616 (Toll Free), 408-747-0185  
Website: <http://www.immunoway.com>  
Address: 2200 Ringwood Ave San Jose, CA 95131 USA



Please scan the QR code to access additional product information:

**Olfactory receptor  
6Q1 Rabbit pAb**

For Research Use Only. Not for Use in Diagnostic Procedures.

[Antibody](#) | [ELISA Kits](#) | [Protein](#) | [Reagents](#)