

# Olfactory receptor 5W2 Rabbit pAb

CatalogNo: YT3421

## Key Features

### Host Species

- Rabbit

### Reactivity

- Human

### Applications

- WB,IF,ELISA

### MW

- 34kD (Observed)

### Isotype

- IgG

## Storage

**Storage\*** -15°C to -25°C/1 year(Do not lower than -25°C)

**Formulation** Liquid in PBS containing 50% glycerol, 0.5% BSA and 0.02% sodium azide.

## Recommended Dilution Ratios

**WB 1:500-1:2000**

**IF 1:200-1:1000**

**ELISA 1:20000**

**Not yet tested in other applications.**

## Basic Information

**Clonality** Polyclonal

## Immunogen Information

**Immunogen** The antiserum was produced against synthesized peptide derived from human OR5W2. AA range:158-207

**Specificity** Olfactory receptor 5W2 Polyclonal Antibody detects endogenous levels of Olfactory receptor 5W2 protein.

## Target Information

**Gene name** OR5W2

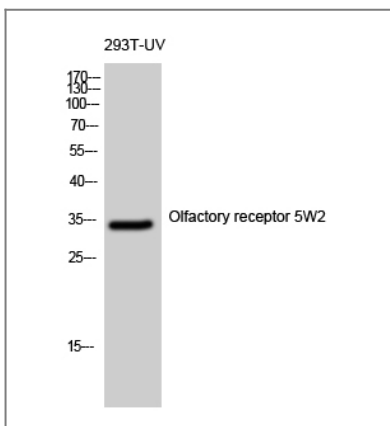
**Protein Name** Olfactory receptor 5W2

Organism	Gene ID	UniProt ID
Human	<a href="#">390148;</a>	<a href="#">Q8NH69;</a>

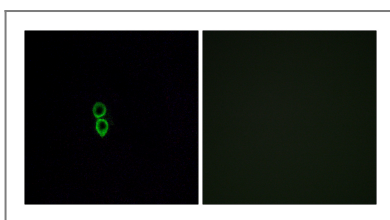
**Cellular Localization** Cell membrane; Multi-pass membrane protein.

**Function** Function:Odorant receptor .,similarity:Belongs to the G-protein coupled receptor 1 family.,

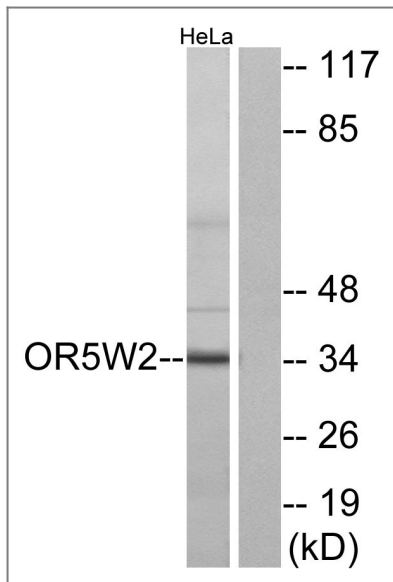
## Validation Data



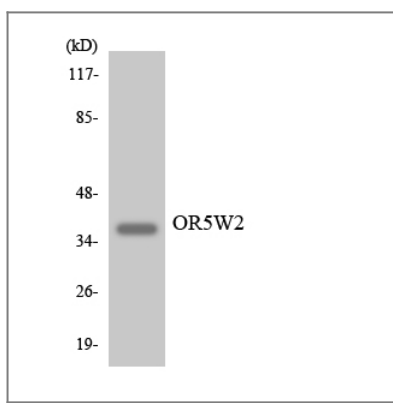
Western Blot analysis of 293T-UV cells using Olfactory receptor 5W2 Polyclonal Antibody diluted at 1:500



Immunofluorescence analysis of A549 cells, using OR5W2 Antibody. The picture on the right is blocked with the synthesized peptide.



Western blot analysis of lysates from HeLa cells, using OR5W2 Antibody. The lane on the right is blocked with the synthesized peptide.



Western blot analysis of the lysates from 293 cells using OR5W2 antibody.

## Contact information

Orders: [order@immunoway.com](mailto:order@immunoway.com)  
 Support: [tech@immunoway.com](mailto:tech@immunoway.com)  
 Telephone: 877-594-3616 (Toll Free), 408-747-0185  
 Website: <http://www.immunoway.com>  
 Address: 2200 Ringwood Ave San Jose, CA 95131 USA



Please scan the QR code to access additional product information:  
**Olfactory receptor  
 5W2 Rabbit pAb**

For Research Use Only. Not for Use in Diagnostic Procedures.

[Antibody](#) | [ELISA Kits](#) | [Protein](#) | [Reagents](#)