

## Olfactory receptor 5M9 Rabbit pAb

CatalogNo: YT3415

### Key Features

#### Host Species

- Rabbit

#### Reactivity

- Human

#### Applications

- WB,IF,ELISA

#### MW

- 38kD (Observed)

#### Isotype

- IgG

### Recommended Dilution Ratios

**WB 1:500-1:2000**

**IF 1:200-1:1000**

**ELISA 1:10000**

**Not yet tested in other applications.**

### Storage

#### Storage\*

-15°C to -25°C/1 year(Do not lower than -25°C)

#### Formulation

Liquid in PBS containing 50% glycerol, 0.5% BSA and 0.02% sodium azide.

### Basic Information

#### Clonality

Polyclonal

### Immunogen Information

#### Immunogen

The antiserum was produced against synthesized peptide derived from human OR5M9. AA range:197-246

#### Specificity

Olfactory receptor 5M9 Polyclonal Antibody detects endogenous levels of Olfactory receptor 5M9 protein.

## | Target Information

**Gene name** OR5M9

**Protein Name** Olfactory receptor 5M9

**Organism**

**Gene ID**

**UniProt ID**

Human

[390162](#);

[Q8NGP3](#);

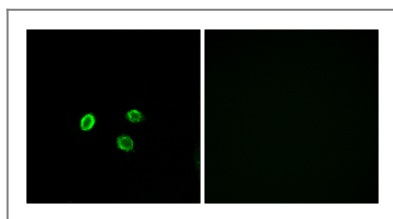
**Cellular Localization**

Cell membrane; Multi-pass membrane protein.

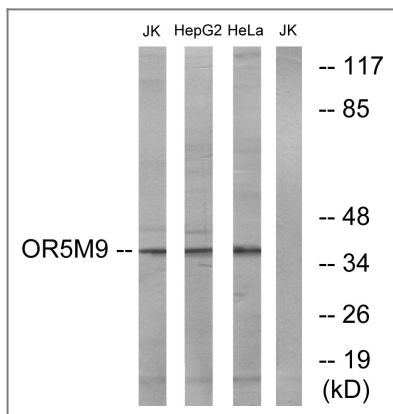
**Function**

Function:Odorant receptor .,similarity:Belongs to the G-protein coupled receptor 1 family.,

## | Validation Data



Immunofluorescence analysis of MCF7 cells, using OR5M9 Antibody. The picture on the right is blocked with the synthesized peptide.



Western blot analysis of lysates from Jurkat, HepG2, and HeLa cells, using OR5M9 Antibody. The lane on the right is blocked with the synthesized peptide.

## | Contact information

Orders: [order@immunoway.com](mailto:order@immunoway.com)  
Support: [tech@immunoway.com](mailto:tech@immunoway.com)  
Telephone: 877-594-3616 (Toll Free), 408-747-0185  
Website: <http://www.immunoway.com>  
Address: 2200 Ringwood Ave San Jose, CA 95131 USA



Please scan the QR code to access additional product information:  
**Olfactory receptor 5M9 Rabbit pAb**

