

## Olfactory receptor 5L1/2 Rabbit pAb

CatalogNo: YT3410

### Key Features

#### Host Species

- Rabbit

#### Reactivity

- Human

#### Applications

- IF,ELISA

#### MW

- 35kD (Calculated)

#### Isotype

- IgG

### Recommended Dilution Ratios

**IF 1:200-1:1000**

**ELISA 1:5000**

**Not yet tested in other applications**

### Storage

#### Storage\*

-15°C to -25°C/1 year(Do not lower than -25°C)

#### Formulation

Liquid in PBS containing 50% glycerol, 0.5% BSA and 0.02% sodium azide.

### Basic Information

#### Clonality

Polyclonal

### Immunogen Information

#### Immunogen

The antiserum was produced against synthesized peptide derived from human OR5L1/2. AA range:55-104

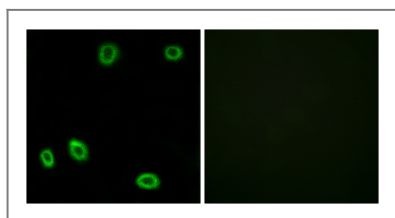
#### Specificity

Olfactory receptor 5L1/2 Polyclonal Antibody detects endogenous levels of Olfactory receptor 5L1/2 protein.

### Target Information

<b>Gene name</b>	OR5L1/OR5L2		
<b>Protein Name</b>	Olfactory receptor 5L1/2		
	<b>Organism</b>	<b>Gene ID</b>	<b>UniProt ID</b>
	Human	<a href="#">219437</a> ; <a href="#">26338</a> ;	<a href="#">Q8NGL2</a> ; <a href="#">Q8NGL0</a> ;
<b>Cellular Localization</b>	Cell membrane; Multi-pass membrane protein.		
<b>Function</b>	Function:Odorant receptor .,similarity:Belongs to the G-protein coupled receptor 1 family.,		

## Validation Data



Immunofluorescence analysis of HUVEC cells, using OR5L1/2 Antibody. The picture on the right is blocked with the synthesized peptide.

## Contact information

Orders: [order@immunoway.com](mailto:order@immunoway.com)  
 Support: [tech@immunoway.com](mailto:tech@immunoway.com)  
 Telephone: 877-594-3616 (Toll Free), 408-747-0185  
 Website: <http://www.immunoway.com>  
 Address: 2200 Ringwood Ave San Jose, CA 95131 USA



Please scan the QR code to access additional product information:  
**Olfactory receptor 5L1/2 Rabbit pAb**

For Research Use Only. Not for Use in Diagnostic Procedures.

[Antibody](#) | [ELISA Kits](#) | [Protein](#) | [Reagents](#)