

# Olfactory receptor 5I1 Rabbit pAb

CatalogNo: YT3407

## Key Features

### Host Species

- Rabbit

### Reactivity

- Human

### Applications

- WB,IF,ELISA

### MW

- 38kD (Observed)

### Isotype

- IgG

## Recommended Dilution Ratios

**WB 1:500-1:2000**

**IF 1:200-1:1000**

**ELISA 1:10000**

**Not yet tested in other applications.**

## Storage

### Storage\*

-15°C to -25°C/1 year(Do not lower than -25°C)

### Formulation

Liquid in PBS containing 50% glycerol, 0.5% BSA and 0.02% sodium azide.

## Basic Information

### Clonality

Polyclonal

## Immunogen Information

### Immunogen

The antiserum was produced against synthesized peptide derived from human OR5I1. AA range:206-255

### Specificity

Olfactory receptor 5I1 Polyclonal Antibody detects endogenous levels of Olfactory receptor 5I1 protein.

---

## | Target Information

**Gene name** OR5I1

**Protein Name** Olfactory receptor 5I1

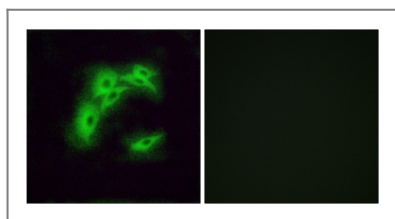
Organism	Gene ID	UniProt ID
Human	<a href="#">10798</a> ;	<a href="#">Q13606</a> ;

**Cellular Localization** Cell membrane; Multi-pass membrane protein.

**Function** Function:Odorant receptor .,similarity:Belongs to the G-protein coupled receptor 1 family.,

---

## | Validation Data



Immunofluorescence analysis of A549 cells, using OR5I1 Antibody. The picture on the right is blocked with the synthesized peptide.

## | Contact information

Orders: [order@immunoway.com](mailto:order@immunoway.com)  
Support: [tech@immunoway.com](mailto:tech@immunoway.com)  
Telephone: 877-594-3616 (Toll Free), 408-747-0185  
Website: <http://www.immunoway.com>  
Address: 2200 Ringwood Ave San Jose, CA 95131 USA



Please scan the QR code to access additional product information:  
**Olfactory receptor 5I1 Rabbit pAb**

---

For Research Use Only. Not for Use in Diagnostic Procedures.

[Antibody](#) | [ELISA Kits](#) | [Protein](#) | [Reagents](#)