

# Olfactory receptor 5H6 Rabbit pAb

CatalogNo: YT3406

## Key Features

### Host Species

- Rabbit

### Reactivity

- Human

### Applications

- WB,IF,ELISA

### MW

- 35kD (Observed)

### Isotype

- IgG

## Recommended Dilution Ratios

**WB 1:500-1:2000**

**IF 1:200-1:1000**

**ELISA 1:10000**

**Not yet tested in other applications.**

## Storage

**Storage\*** -15°C to -25°C/1 year(Do not lower than -25°C)

**Formulation** Liquid in PBS containing 50% glycerol, 0.5% BSA and 0.02% sodium azide.

## Basic Information

**Clonality** Polyclonal

## Immunogen Information

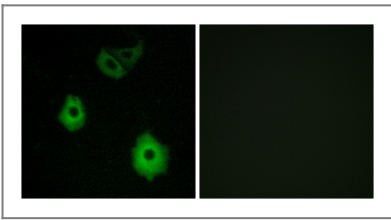
**Immunogen** The antiserum was produced against synthesized peptide derived from human OR5H6. AA range:215-264

**Specificity** Olfactory receptor 5H6 Polyclonal Antibody detects endogenous levels of Olfactory receptor 5H6 protein.

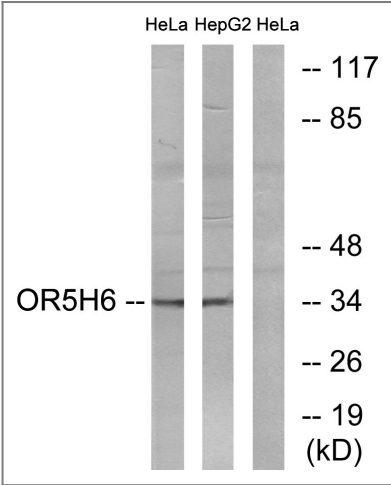
## Target Information

|                       |  |                         |                          |
|-----------------------|--|-------------------------|--------------------------|
| Gene name             | OR5H6  |                         |                          |
| Protein Name          | Olfactory receptor 5H6   |                         |                          |
|                       | Organism   | Gene ID                 | UniProt ID               |
|                       | Human  | <a href="#">79295</a> ; | <a href="#">Q8NGV6</a> ; |
| Cellular Localization | Cell membrane; Multi-pass membrane protein.  |                         |                          |
| Function              | Caution:It is uncertain whether Met-1 or Met-17 is the initiator.,Function:Odorant receptor<br>.,similarity:Belongs to the G-protein coupled receptor 1 family., |                         |                          |

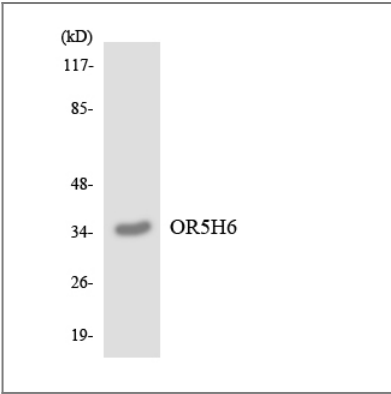
## Validation Data



Immunofluorescence analysis of A549 cells, using OR5H6 Antibody. The picture on the right is blocked with the synthesized peptide.



Western blot analysis of lysates from HeLa and HepG2 cells, using OR5H6 Antibody. The lane on the right is blocked with the synthesized peptide.



Western blot analysis of the lysates from COLO205 cells using OR5H6 antibody.

## | Contact information

Orders: order@immunoway.com  
Support: tech@immunoway.com  
Telephone: 877-594-3616 (Toll Free), 408-747-0185  
Website: <http://www.immunoway.com>  
Address: 2200 Ringwood Ave San Jose, CA 95131 USA



Please scan the QR code  
to access additional  
product information:

**Olfactory receptor  
5H6 Rabbit pAb**

---

For Research Use Only. Not for Use in Diagnostic Procedures.

[Antibody](#) | [ELISA Kits](#) | [Protein](#) | [Reagents](#)