

## Olfactory receptor 56B4 Rabbit pAb

CatalogNo: YT3390

### Key Features

#### Host Species

- Rabbit

#### Reactivity

- Human

#### Applications

- WB,IF,ELISA

#### MW

- 34kD (Observed)

#### Isotype

- IgG

### Recommended Dilution Ratios

**WB 1:500-1:2000**

**IF 1:200-1:1000**

**ELISA 1:5000**

**Not yet tested in other applications.**

### Storage

#### Storage\*

-15°C to -25°C/1 year(Do not lower than -25°C)

#### Formulation

Liquid in PBS containing 50% glycerol, 0.5% BSA and 0.02% sodium azide.

### Basic Information

#### Clonality

Polyclonal

### Immunogen Information

#### Immunogen

The antiserum was produced against synthesized peptide derived from human OR56B4. AA range:241-290

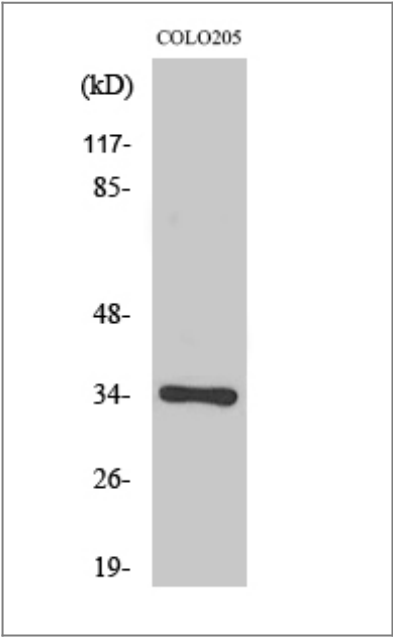
#### Specificity

Olfactory receptor 56B4 Polyclonal Antibody detects endogenous levels of Olfactory receptor 56B4 protein.

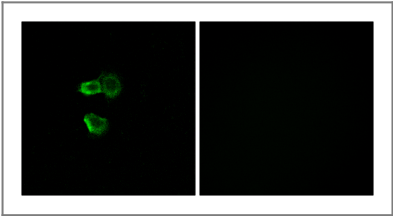
## | Target Information

Gene name	OR56B4		
Protein Name	Olfactory receptor 56B4		
	Organism	Gene ID	UniProt ID
	Human	<a href="#">196335</a> ;	<a href="#">Q8NH76</a> ;
Cellular Localization	Cell membrane; Multi-pass membrane protein.		
Function	Function:Odorant receptor .,similarity:Belongs to the G-protein coupled receptor 1 family.,		

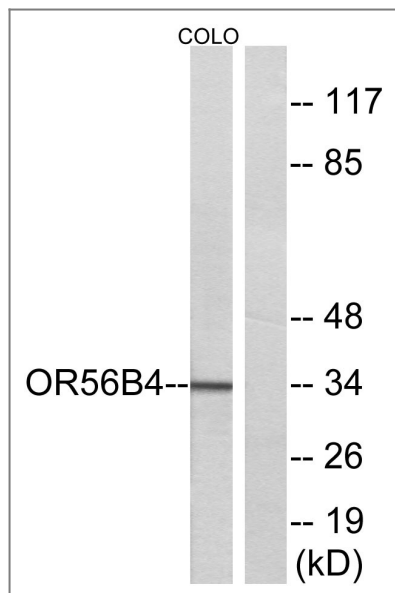
## | Validation Data



Western Blot analysis of various cells using Olfactory receptor 56B4 Polyclonal Antibody



Immunofluorescence analysis of MCF7 cells, using OR56B4 Antibody. The picture on the right is blocked with the synthesized peptide.



Western blot analysis of lysates from COLO cells, using OR56B4 Antibody. The lane on the right is blocked with the synthesized peptide.

## Contact information

Orders: [order@immunoway.com](mailto:order@immunoway.com)  
 Support: [tech@immunoway.com](mailto:tech@immunoway.com)  
 Telephone: 877-594-3616 (Toll Free), 408-747-0185  
 Website: <http://www.immunoway.com>  
 Address: 2200 Ringwood Ave San Jose, CA 95131 USA



Please scan the QR code to access additional product information:  
**Olfactory receptor 56B4 Rabbit pAb**

For Research Use Only. Not for Use in Diagnostic Procedures.

[Antibody](#) | [ELISA Kits](#) | [Protein](#) | [Reagents](#)