

# Olfactory receptor 56A1 Rabbit pAb

CatalogNo: YT3387

## Key Features

### Host Species

- Rabbit

### Reactivity

- Human

### Applications

- IF,ELISA

### MW

- 35kD (Calculated)

### Isotype

- IgG

## Storage

**Storage\*** -15°C to -25°C/1 year(Do not lower than -25°C)

**Formulation** Liquid in PBS containing 50% glycerol, 0.5% BSA and 0.02% sodium azide.

## Recommended Dilution Ratios

**IF 1:200-1:1000**

**ELISA 1:5000**

**Not yet tested in other applications**

## Basic Information

**Clonality** Polyclonal

## Immunogen Information

**Immunogen** The antiserum was produced against synthesized peptide derived from human OR56A1. AA range:241-290

**Specificity** Olfactory receptor 56A1 Polyclonal Antibody detects endogenous levels of Olfactory receptor 56A1 protein.

## Target Information

**Gene name** OR56A1

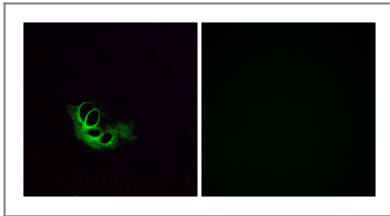
**Protein Name** Olfactory receptor 56A1

Organism	Gene ID	UniProt ID
Human	<a href="#">120796</a> ;	<a href="#">Q8NGH5</a> ;

**Cellular Localization** Cell membrane; Multi-pass membrane protein.

**Function** Caution:It is uncertain whether Met-1 or Met-5 is the initiator.,Function:Odorant receptor  
.,similarity:Belongs to the G-protein coupled receptor 1 family.,

## Validation Data



Immunofluorescence analysis of HeLa cells, using OR56A1 Antibody. The picture on the right is blocked with the synthesized peptide.

## Contact information

Orders: [order@immunoway.com](mailto:order@immunoway.com)  
Support: [tech@immunoway.com](mailto:tech@immunoway.com)  
Telephone: 877-594-3616 (Toll Free), 408-747-0185  
Website: <http://www.immunoway.com>  
Address: 2200 Ringwood Ave San Jose, CA 95131 USA



Please scan the QR code to access additional product information:  
**Olfactory receptor 56A1 Rabbit pAb**

For Research Use Only. Not for Use in Diagnostic Procedures.

[Antibody](#) | [ELISA Kits](#) | [Protein](#) | [Reagents](#)