

Olfactory receptor 52A4 Rabbit pAb

CatalogNo: YT3374

Key Features

Host Species

- Rabbit

Reactivity

- Human

Applications

- WB,IF,ELISA

MW

- 35kD (Observed)

Isotype

- IgG

Storage

Storage* -15°C to -25°C/1 year(Do not lower than -25°C)

Formulation Liquid in PBS containing 50% glycerol, 0.5% BSA and 0.02% sodium azide.

Recommended Dilution Ratios

WB 1:500-1:2000

IF 1:200-1:1000

ELISA 1:10000

Not yet tested in other applications.

Basic Information

Clonality Polyclonal

Immunogen Information

Immunogen The antiserum was produced against synthesized peptide derived from human OR52A4. AA range:211-260

Specificity Olfactory receptor 52A4 Polyclonal Antibody detects endogenous levels of Olfactory receptor 52A4 protein.

Target Information

Gene name OR52A4

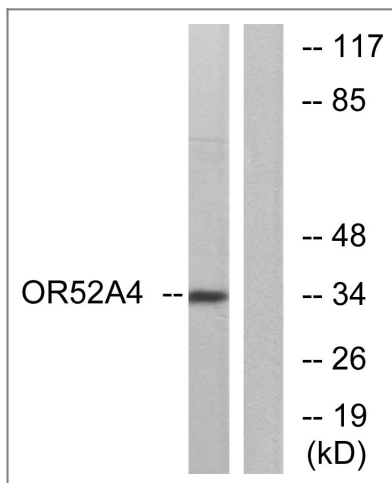
Protein Name Putative olfactory receptor 52A4

Organism	Gene ID	UniProt ID
Human	390053 ;	A6NMU1 ;

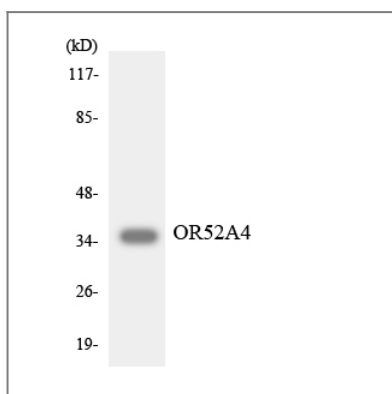
Cellular Localization Cell membrane; Multi-pass membrane protein.

Function Caution:Could be the product of a pseudogene. Has a truncated and frameshifted C-terminal region.,similarity:Belongs to the G-protein coupled receptor 1 family.,

Validation Data



Western blot analysis of lysates from MCF-7 cells, using OR52A4 Antibody. The lane on the right is blocked with the synthesized peptide.



Western blot analysis of the lysates from K562 cells using OR52A4 antibody.

Contact information

Orders: order@immunoway.com
Support: tech@immunoway.com
Telephone: 877-594-3616 (Toll Free), 408-747-0185
Website: http://www.immunoway.com
Address: 2200 Ringwood Ave San Jose, CA 95131 USA



Please scan the QR code
to access additional
product information:
**Olfactory receptor
52A4 Rabbit pAb**

For Research Use Only. Not for Use in Diagnostic Procedures.

[Antibody](#) | [ELISA Kits](#) | [Protein](#) | [Reagents](#)