

Olfactory receptor 4F4/4F5/4F17 Rabbit pAb

CatalogNo: YT3344

Key Features

Host Species

- Rabbit

Reactivity

- Human

Applications

- WB, ELISA

MW

- 34kD (Observed)

Isotype

- IgG

Recommended Dilution Ratios

WB 1:500-1:2000

ELISA 1:5000

Not yet tested in other applications.

Storage

Storage*

-15°C to -25°C/1 year(Do not lower than -25°C)

Formulation

Liquid in PBS containing 50% glycerol, 0.5% BSA and 0.02% sodium azide.

Basic Information

Clonality

Polyclonal

Immunogen Information

Immunogen

The antiserum was produced against synthesized peptide derived from human OR4F4/4F5/4F17. AA range:51-100

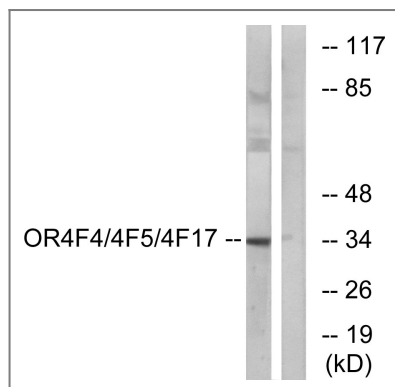
Specificity

Olfactory receptor 4F4/4F5/4F17 Polyclonal Antibody detects endogenous levels of Olfactory receptor 4F4/4F5/4F17 protein.

Target Information

Gene name	OR4F17		
Protein Name	Olfactory receptor 4F4/4F5/4F17		
	Organism	Gene ID	UniProt ID
	Human	81099 ; 26682 ; 79501 ;	Q8NGA8 ; Q96R69 ; Q8NH21 ;
Cellular Localization	Cell membrane; Multi-pass membrane protein.		
Tissue specificity	Olfactory epithelium,		
Function	Function:Odorant receptor .,similarity:Belongs to the G-protein coupled receptor 1 family.,		

Validation Data



Western blot analysis of lysates from MCF-7 cells, using OR4F4/4F5/4F17 Antibody. The lane on the right is blocked with the synthesized peptide.

Contact information

Orders: order@immunoway.com
 Support: tech@immunoway.com
 Telephone: 877-594-3616 (Toll Free), 408-747-0185
 Website: <http://www.immunoway.com>
 Address: 2200 Ringwood Ave San Jose, CA 95131 USA



Please scan the QR code
 to access additional
 product information:
Olfactory receptor
4F4/4F5/4F17
Rabbit pAb

For Research Use Only. Not for Use in Diagnostic Procedures.

[Antibody](#) | [ELISA Kits](#) | [Protein](#) | [Reagents](#)