

Olfactory receptor 4F4 Rabbit pAb

CatalogNo: YT3343

| Key Features

Host Species

- Rabbit

Reactivity

- Human

Applications

- WB,IF,ELISA

MW

- 30kD (Observed)

Isotype

- IgG

| Recommended Dilution Ratios

WB 1:500-1:2000

IF 1:200-1:1000

ELISA 1:20000

Not yet tested in other applications.

| Storage

Storage*

-15°C to -25°C/1 year(Do not lower than -25°C)

Formulation

Liquid in PBS containing 50% glycerol, 0.5% BSA and 0.02% sodium azide.

| Basic Information

Clonality

Polyclonal

| Immunogen Information

Immunogen

The antiserum was produced against synthesized peptide derived from human OR4F4. AA range:256-305

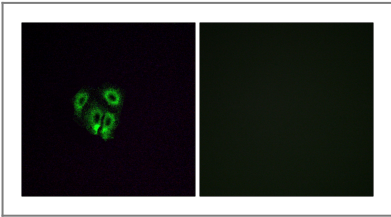
Specificity

Olfactory receptor 4F4 Polyclonal Antibody detects endogenous levels of Olfactory receptor 4F4 protein.

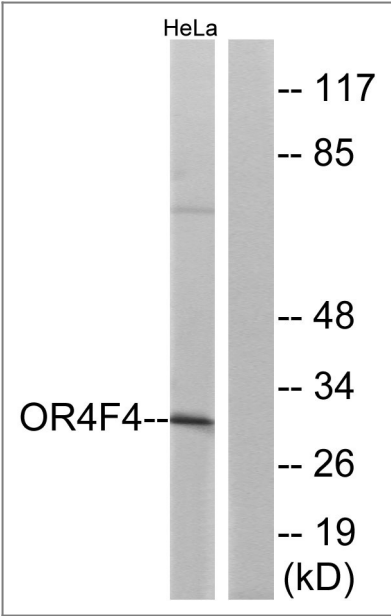
| Target Information

Gene name	OR4F4		
Protein Name	Olfactory receptor 4F4		
	Organism	Gene ID	UniProt ID
	Human	26682 ;	Q96R69 ;
Cellular Localization	Cell membrane; Multi-pass membrane protein.		
Tissue specificity	Olfactory epithelium,		
Function	Function:Odorant receptor .,similarity:Belongs to the G-protein coupled receptor 1 family.,		

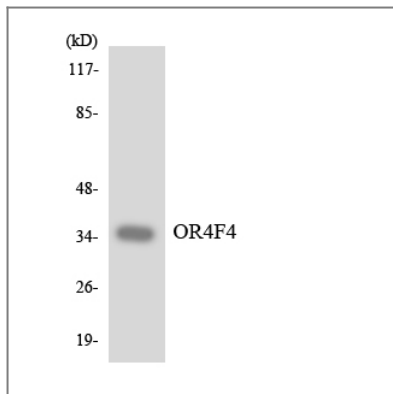
| Validation Data



Immunofluorescence analysis of A549 cells, using OR4F4 Antibody. The picture on the right is blocked with the synthesized peptide.



Western blot analysis of lysates from HeLa cells, using OR4F4 Antibody. The lane on the right is blocked with the synthesized peptide.



Western blot analysis of the lysates from HeLa cells using OR4F4 antibody.

Contact information

Orders: order@immunoway.com
Support: tech@immunoway.com
Telephone: 877-594-3616 (Toll Free), 408-747-0185
Website: <http://www.immunoway.com>
Address: 2200 Ringwood Ave San Jose, CA 95131 USA



Please scan the QR code to access additional product information:

**Olfactory receptor
4F4 Rabbit pAb**

For Research Use Only. Not for Use in Diagnostic Procedures.

[Antibody](#) | [ELISA Kits](#) | [Protein](#) | [Reagents](#)