

Olfactory receptor 4E2 Rabbit pAb

CatalogNo: YT3342

Key Features

Host Species

- Rabbit

Reactivity

- Human, Mouse

Applications

- IF, ELISA

MW

- 35kD (Calculated)

Isotype

- IgG

Recommended Dilution Ratios

IF 1:200-1:1000

ELISA 1:20000

Not yet tested in other applications

Storage

Storage*

-15°C to -25°C/1 year (Do not lower than -25°C)

Formulation

Liquid in PBS containing 50% glycerol, 0.5% BSA and 0.02% sodium azide.

Basic Information

Clonality

Polyclonal

Immunogen Information

Immunogen

The antiserum was produced against synthesized peptide derived from human OR4E2. AA range: 228-277

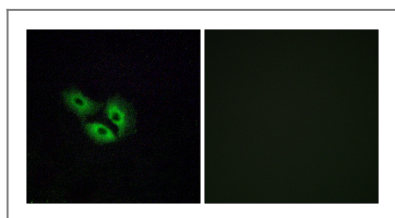
Specificity

Olfactory receptor 4E2 Polyclonal Antibody detects endogenous levels of Olfactory receptor 4E2 protein.

Target Information

| | | | |
|------------------------------|---|-------------------------|--------------------------|
| Gene name | OR4E2 | | |
| Protein Name | Olfactory receptor 4E2 | | |
| | Organism | Gene ID | UniProt ID |
| | Human | 26686 ; | Q8NGC2 ; |
| Cellular Localization | Cell membrane; Multi-pass membrane protein. | | |
| Function | Function:Odorant receptor .,similarity:Belongs to the G-protein coupled receptor 1 family., | | |

Validation Data



Immunofluorescence analysis of A549 cells, using OR4E2 Antibody. The picture on the right is blocked with the synthesized peptide.

Contact information

Orders: order@immunoway.com
 Support: tech@immunoway.com
 Telephone: 877-594-3616 (Toll Free), 408-747-0185
 Website: <http://www.immunoway.com>
 Address: 2200 Ringwood Ave San Jose, CA 95131 USA



Please scan the QR code to access additional product information:
Olfactory receptor 4E2 Rabbit pAb

For Research Use Only. Not for Use in Diagnostic Procedures.

[Antibody](#) | [ELISA Kits](#) | [Protein](#) | [Reagents](#)