

Olfactory receptor 4D1 Rabbit pAb

CatalogNo: YT3340

Key Features

Host Species

- Rabbit

Reactivity

- Human

Applications

- WB,IF,ELISA

MW

- 34kD (Observed)

Isotype

- IgG

Storage

Storage* -15°C to -25°C/1 year(Do not lower than -25°C)

Formulation Liquid in PBS containing 50% glycerol, 0.5% BSA and 0.02% sodium azide.

Recommended Dilution Ratios

WB 1:500-1:2000

IF 1:200-1:1000

ELISA 1:40000

Not yet tested in other applications.

Basic Information

Clonality Polyclonal

Immunogen Information

Immunogen The antiserum was produced against synthesized peptide derived from human OR4D1. AA range:261-310

Specificity Olfactory receptor 4D1 Polyclonal Antibody detects endogenous levels of Olfactory receptor 4D1 protein.

Target Information

Gene name OR4D1

Protein Name Olfactory receptor 4D1

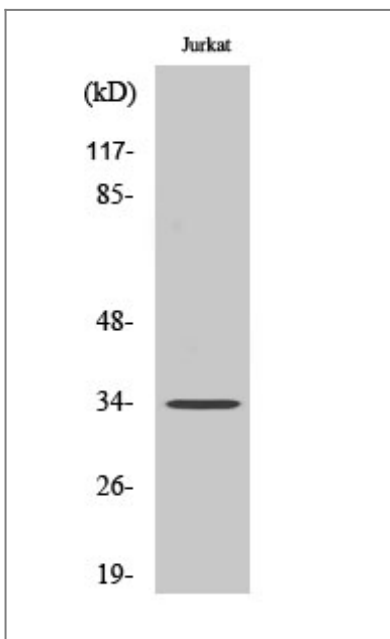
Organism	Gene ID	UniProt ID
Human	26689;	Q15615;

Cellular Localization Cell membrane; Multi-pass membrane protein.

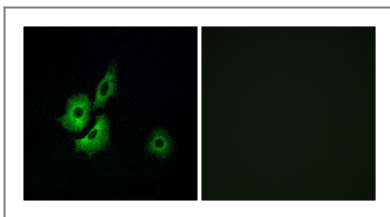
Tissue specificity Pooled, Testicle, Testis,

Function Function: Odorant receptor ., similarity: Belongs to the G-protein coupled receptor 1 family.,

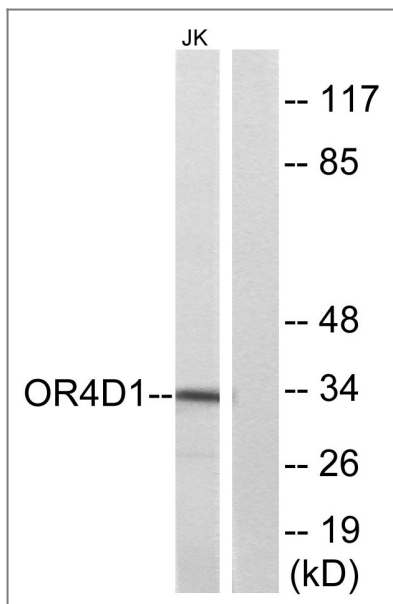
Validation Data



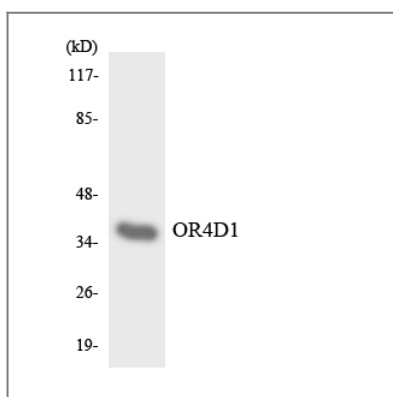
Western Blot analysis of various cells using Olfactory receptor 4D1 Polyclonal Antibody diluted at 1:500



Immunofluorescence analysis of A549 cells, using OR4D1 Antibody. The picture on the right is blocked with the synthesized peptide.



Western blot analysis of lysates from Jurkat cells, using OR4D1 Antibody. The lane on the right is blocked with the synthesized peptide.



Western blot analysis of the lysates from HepG2 cells using OR4D1 antibody.

Contact information

Orders: order@immunoway.com
 Support: tech@immunoway.com
 Telephone: 877-594-3616 (Toll Free), 408-747-0185
 Website: <http://www.immunoway.com>
 Address: 2200 Ringwood Ave San Jose, CA 95131 USA



Please scan the QR code to access additional product information:
Olfactory receptor 4D1 Rabbit pAb

For Research Use Only. Not for Use in Diagnostic Procedures.

[Antibody](#) | [ELISA Kits](#) | [Protein](#) | [Reagents](#)