

Olfactory receptor 3A2/3A3 Rabbit pAb

CatalogNo: YT3329

Key Features

Host Species

- Rabbit

Reactivity

- Human

Applications

- WB,IF,ELISA

MW

- 36kD (Observed)

Isotype

- IgG

Recommended Dilution Ratios

WB 1:500-1:2000

IF 1:200-1:1000

ELISA 1:5000

Not yet tested in other applications.

Storage

Storage* -15°C to -25°C/1 year(Do not lower than -25°C)

Formulation Liquid in PBS containing 50% glycerol, 0.5% BSA and 0.02% sodium azide.

Basic Information

Clonality Polyclonal

Immunogen Information

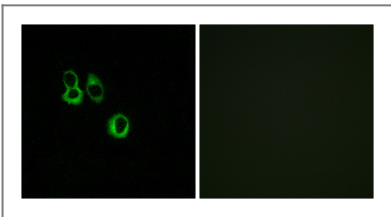
Immunogen The antiserum was produced against synthesized peptide derived from human OR3A2/3. AA range:65-114

Specificity Olfactory receptor 3A2/3A3 Polyclonal Antibody detects endogenous levels of Olfactory receptor 3A2/3A3 protein.

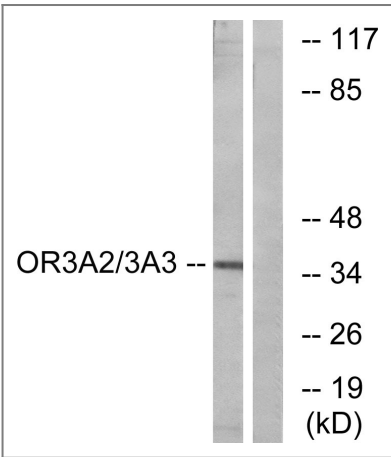
Target Information

Gene name	OR3A2/OR3A3		
Protein Name	Olfactory receptor 3A2/3		
	Organism	Gene ID	UniProt ID
	Human	8392 ; 4995 ;	P47888 ; P47893 ;
Cellular Localization	Cell membrane; Multi-pass membrane protein.		
Function	Caution:It is uncertain whether Met-1 or Met-7 is the initiator.,Function:Odorant receptor .,similarity:Belongs to the G-protein coupled receptor 1 family.,		

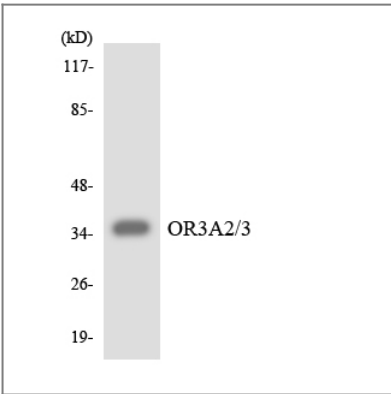
Validation Data



Immunofluorescence analysis of MCF7 cells, using OR3A2/3 Antibody. The picture on the right is blocked with the synthesized peptide.



Western blot analysis of lysates from MCF-7 cells, using OR3A2/3 Antibody. The lane on the right is blocked with the synthesized peptide.



Western blot analysis of the lysates from HepG2 cells using OR3A2/3 antibody.

| Contact information

Orders: order@immunoway.com
Support: tech@immunoway.com
Telephone: 877-594-3616 (Toll Free), 408-747-0185
Website: <http://www.immunoway.com>
Address: 2200 Ringwood Ave San Jose, CA 95131 USA



Please scan the QR code
to access additional
product information:
**Olfactory receptor
3A2/3A3 Rabbit pAb**

For Research Use Only. Not for Use in Diagnostic Procedures.

[Antibody](#) | [ELISA Kits](#) | [Protein](#) | [Reagents](#)