

Olfactory receptor 2Z1 Rabbit pAb

CatalogNo: YT3327

Key Features

Host Species

- Rabbit

Reactivity

- Human

Applications

- IF,ELISA

MW

- 34kD (Calculated)

Isotype

- IgG

Recommended Dilution Ratios

IF 1:200-1:1000

ELISA 1:10000

Not yet tested in other applications

Storage

Storage*

-15°C to -25°C/1 year(Do not lower than -25°C)

Formulation

Liquid in PBS containing 50% glycerol, 0.5% BSA and 0.02% sodium azide.

Basic Information

Clonality

Polyclonal

Immunogen Information

Immunogen

The antiserum was produced against synthesized peptide derived from human OR2Z1. AA range:201-250

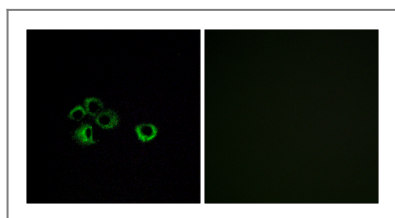
Specificity

Olfactory receptor 2Z1 Polyclonal Antibody detects endogenous levels of Olfactory receptor 2Z1 protein.

Target Information

Gene name	OR2Z1		
Protein Name	Olfactory receptor 2Z1		
	Organism	Gene ID	UniProt ID
	Human	284383 ;	Q8NG97 ;
Cellular Localization	Cell membrane; Multi-pass membrane protein.		
Function	Function:Odorant receptor .,similarity:Belongs to the G-protein coupled receptor 1 family.,		

Validation Data



Immunofluorescence analysis of MCF7 cells, using OR2Z1 Antibody. The picture on the right is blocked with the synthesized peptide.

Contact information

Orders: order@immunoway.com
 Support: tech@immunoway.com
 Telephone: 877-594-3616 (Toll Free), 408-747-0185
 Website: <http://www.immunoway.com>
 Address: 2200 Ringwood Ave San Jose, CA 95131 USA



Please scan the QR code to access additional product information:
Olfactory receptor 2Z1 Rabbit pAb

For Research Use Only. Not for Use in Diagnostic Procedures.

[Antibody](#) | [ELISA Kits](#) | [Protein](#) | [Reagents](#)