

# Olfactory receptor 211 Rabbit pAb

CatalogNo: YT3309

## Key Features

### Host Species

- Rabbit

### Reactivity

- Human

### Applications

- WB,IF,ELISA

### MW

- 34kD (Observed)

### Isotype

- IgG

## Storage

**Storage\*** -15°C to -25°C/1 year(Do not lower than -25°C)

**Formulation** Liquid in PBS containing 50% glycerol, 0.5% BSA and 0.02% sodium azide.

## Recommended Dilution Ratios

**WB 1:500-1:2000**

**IF 1:200-1:1000**

**ELISA 1:20000**

**Not yet tested in other applications.**

## Basic Information

**Clonality** Polyclonal

## Immunogen Information

**Immunogen** The antiserum was produced against synthesized peptide derived from human OR211. AA range:261-310

**Specificity** Olfactory receptor 211 Polyclonal Antibody detects endogenous levels of Olfactory receptor 211 protein.

## Target Information

**Gene name** OR211P

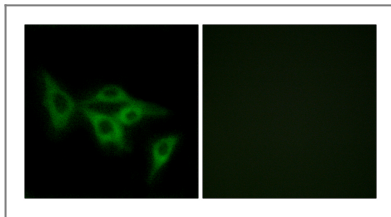
**Protein Name** Putative olfactory receptor 211

Organism	Gene ID	UniProt ID
Human	<a href="#">442197</a> ;	<a href="#">Q8NGU4</a> ;

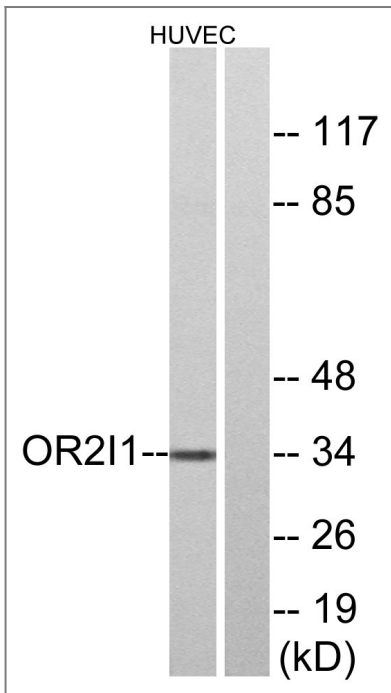
**Cellular Localization** Cell membrane; Multi-pass membrane protein.

**Function** Caution:Could be the product of a pseudogene.,Function:Odorant receptor  
.,similarity:Belongs to the G-protein coupled receptor 1 family.,

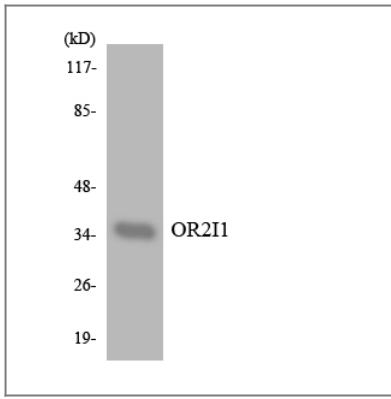
## Validation Data



Immunofluorescence analysis of LOVO cells, using OR211 Antibody. The picture on the right is blocked with the synthesized peptide.



Western blot analysis of lysates from HUVEC cells, using OR211 Antibody. The lane on the right is blocked with the synthesized peptide.



Western blot analysis of the lysates from HUVEC cells using OR2I1 antibody.

## Contact information

Orders: [order@immunoway.com](mailto:order@immunoway.com)  
Support: [tech@immunoway.com](mailto:tech@immunoway.com)  
Telephone: 877-594-3616 (Toll Free), 408-747-0185  
Website: <http://www.immunoway.com>  
Address: 2200 Ringwood Ave San Jose, CA 95131 USA



Please scan the QR code to access additional product information:

**Olfactory receptor  
2I1 Rabbit pAb**

For Research Use Only. Not for Use in Diagnostic Procedures.

[Antibody](#) | [ELISA Kits](#) | [Protein](#) | [Reagents](#)