

Olfactory receptor 2C3 Rabbit pAb

CatalogNo: YT3302

Key Features

Host Species

- Rabbit

Reactivity

- Human

Applications

- WB,IF,ELISA

MW

- 36kD (Observed)

Isotype

- IgG

Recommended Dilution Ratios

WB 1:500-1:2000

IF 1:200-1:1000

ELISA 1:10000

Not yet tested in other applications.

Storage

Storage*

-15°C to -25°C/1 year(Do not lower than -25°C)

Formulation

Liquid in PBS containing 50% glycerol, 0.5% BSA and 0.02% sodium azide.

Basic Information

Clonality

Polyclonal

Immunogen Information

Immunogen

The antiserum was produced against synthesized peptide derived from human OR2C3. AA range:231-280

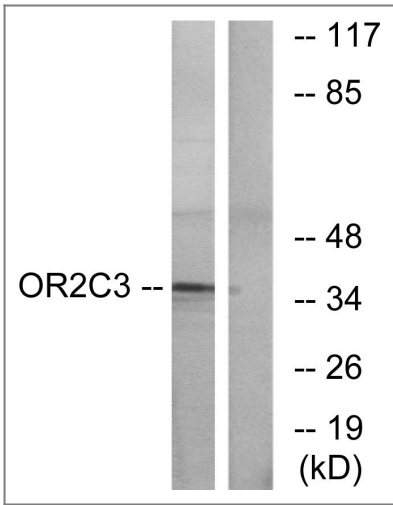
Specificity

Olfactory receptor 2C3 Polyclonal Antibody detects endogenous levels of Olfactory receptor 2C3 protein.

Target Information

Gene name	OR2C3		
Protein Name	Olfactory receptor 2C3		
	Organism	Gene ID	UniProt ID
	Human	81472 ;	Q8N628 ;
Cellular Localization	Cell membrane; Multi-pass membrane protein.		
Tissue specificity	Melanoma,		
Function	Caution:It is uncertain whether Met-1 or Met-2 is the initiator.,Function:Odorant receptor .,similarity:Belongs to the G-protein coupled receptor 1 family.,		

Validation Data



Western blot analysis of lysates from COLO cells, using OR2C3 Antibody. The lane on the right is blocked with the synthesized peptide.

Contact information

Orders: order@immunoway.com
Support: tech@immunoway.com
Telephone: 877-594-3616 (Toll Free), 408-747-0185
Website: <http://www.immunoway.com>
Address: 2200 Ringwood Ave San Jose, CA 95131 USA



Please scan the QR code to access additional product information:
Olfactory receptor 2C3 Rabbit pAb

