

Olfactory receptor 2AP1 Rabbit pAb

CatalogNo: YT3297

Key Features

Host Species

- Rabbit

Reactivity

- Human

Applications

- WB,IF,ELISA

MW

- 40kD (Observed)

Isotype

- IgG

Recommended Dilution Ratios

WB 1:500-1:2000

IF 1:200-1:1000

ELISA 1:5000

Not yet tested in other applications.

Storage

Storage*

-15°C to -25°C/1 year(Do not lower than -25°C)

Formulation

Liquid in PBS containing 50% glycerol, 0.5% BSA and 0.02% sodium azide.

Basic Information

Clonality

Polyclonal

Immunogen Information

Immunogen

The antiserum was produced against synthesized peptide derived from human OR2AP1. AA range:231-280

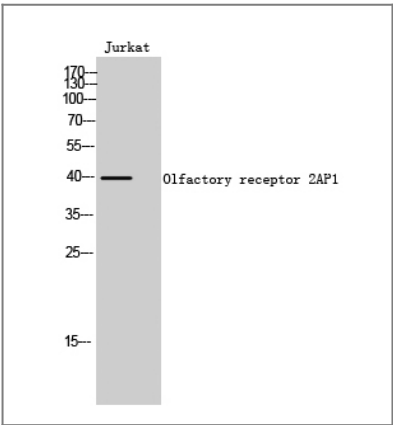
Specificity

Olfactory receptor 2AP1 Polyclonal Antibody detects endogenous levels of Olfactory receptor 2AP1 protein.

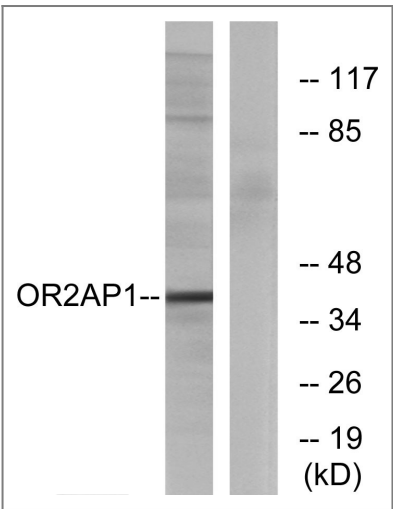
Target Information

| | | | |
|-----------------------|---|-------------------------|-------------------------|
| Gene name | OR2AP1 | | |
| Protein Name | Olfactory receptor 2AP1 | | |
| | Organism | Gene ID | UniProt ID |
| | Human | 121129; | Q8NGE2; |
| Cellular Localization | Cell membrane; Multi-pass membrane protein. | | |
| Function | Function:Odorant receptor .,similarity:Belongs to the G-protein coupled receptor 1 family., | | |

Validation Data



Western Blot analysis of Jurkat cells using Olfactory receptor 2AP1 Polyclonal Antibody



Western blot analysis of lysates from Jurkat cells, using OR2AP1 Antibody. The lane on the right is blocked with the synthesized peptide.

Contact information

Orders: order@immunoway.com
Support: tech@immunoway.com
Telephone: 877-594-3616 (Toll Free), 408-747-0185
Website: <http://www.immunoway.com>
Address: 2200 Ringwood Ave San Jose, CA 95131 USA



Please scan the QR code
to access additional
product information:
**Olfactory receptor
2AP1 Rabbit pAb**

For Research Use Only. Not for Use in Diagnostic Procedures.

[Antibody](#) | [ELISA Kits](#) | [Protein](#) | [Reagents](#)