

Olfactory receptor 1S1/2 Rabbit pAb

CatalogNo: YT3287

Key Features

Host Species

- Rabbit

Reactivity

- Human

Applications

- WB,IF,ELISA

MW

- 33kD (Observed)

Isotype

- IgG

Recommended Dilution Ratios

WB 1:500-1:2000

IF 1:200-1:1000

ELISA 1:20000

Not yet tested in other applications.

Storage

Storage*

-15°C to -25°C/1 year(Do not lower than -25°C)

Formulation

Liquid in PBS containing 50% glycerol, 0.5% BSA and 0.02% sodium azide.

Basic Information

Clonality

Polyclonal

Immunogen Information

Immunogen

The antiserum was produced against synthesized peptide derived from human OR1S1/1S2. AA range:241-290

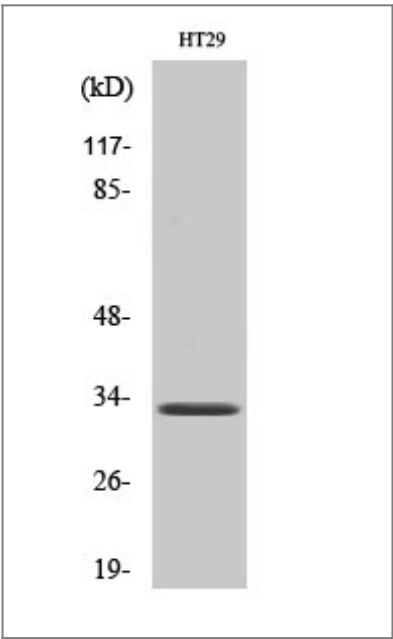
Specificity

Olfactory receptor 1S1/2 Polyclonal Antibody detects endogenous levels of Olfactory receptor 1S1/2 protein.

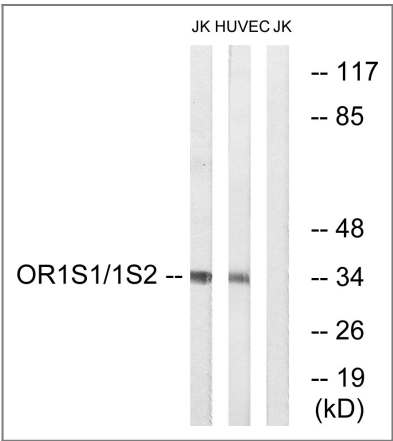
Target Information

Gene name	OR1S1/OR1S2		
Protein Name	Olfactory receptor 1S1/2		
	Organism	Gene ID	UniProt ID
	Human	219958 ; 219959 ;	Q8NGQ3 ; Q8NH92 ;
Cellular Localization	Cell membrane; Multi-pass membrane protein.		
Function	Caution:It is uncertain whether Met-1 or Met-14 is the initiator.,Function:Odorant receptor .,similarity:Belongs to the G-protein coupled receptor 1 family.,		

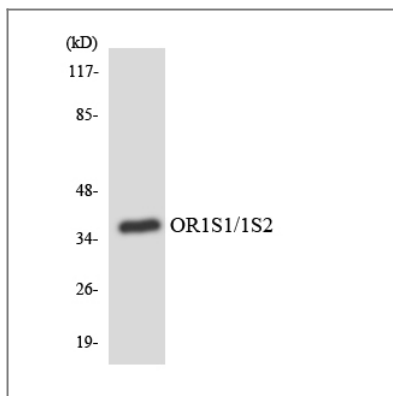
Validation Data



Western Blot analysis of HuvEc cells using Olfactory receptor 1S1/2 Polyclonal Antibody



Western blot analysis of lysates from Jurkat and HUVEC cells, using OR1S1/1S2 Antibody. The lane on the right is blocked with the synthesized peptide.



Western blot analysis of the lysates from HUVEC cells using OR1S1/1S2 antibody.

Contact information

Orders: order@immunoway.com
Support: tech@immunoway.com
Telephone: 877-594-3616 (Toll Free), 408-747-0185
Website: <http://www.immunoway.com>
Address: 2200 Ringwood Ave San Jose, CA 95131 USA



Please scan the QR code to access additional product information:

**Olfactory receptor
1S1/2 Rabbit pAb**

For Research Use Only. Not for Use in Diagnostic Procedures.

[Antibody](#) | [ELISA Kits](#) | [Protein](#) | [Reagents](#)