

Olfactory receptor 13C4 Rabbit pAb

CatalogNo: YT3274

Key Features

Host Species

- Rabbit

Reactivity

- Human, Monkey

Applications

- WB, IF, ELISA

MW

- 35kD (Observed)

Isotype

- IgG

Recommended Dilution Ratios

WB 1:500-1:2000

IF 1:200-1:1000

ELISA 1:5000

Not yet tested in other applications.

Storage

Storage*

-15°C to -25°C/1 year (Do not lower than -25°C)

Formulation

Liquid in PBS containing 50% glycerol, 0.5% BSA and 0.02% sodium azide.

Basic Information

Clonality

Polyclonal

Immunogen Information

Immunogen

The antiserum was produced against synthesized peptide derived from human OR13C4. AA range: 201-250

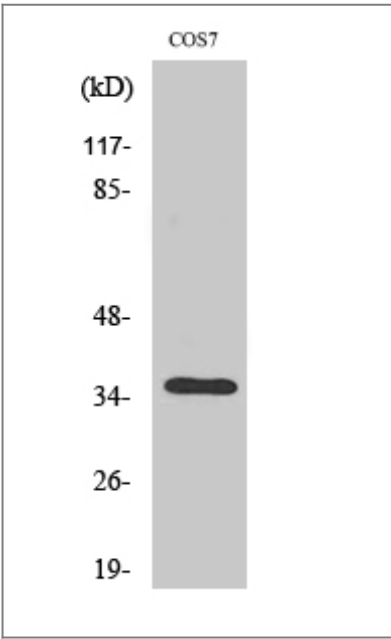
Specificity

Olfactory receptor 13C4 Polyclonal Antibody detects endogenous levels of Olfactory receptor 13C4 protein.

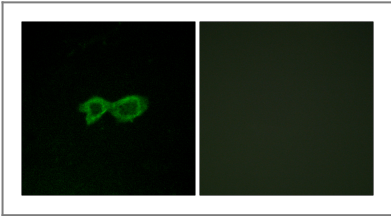
| Target Information

Gene name	OR13C4		
Protein Name	Olfactory receptor 13C4		
	Organism	Gene ID	UniProt ID
	Human	138804 ;	Q8NGS5 ;
Cellular Localization	Cell membrane; Multi-pass membrane protein.		
Function	Function:Odorant receptor .,similarity:Belongs to the G-protein coupled receptor 1 family.,		

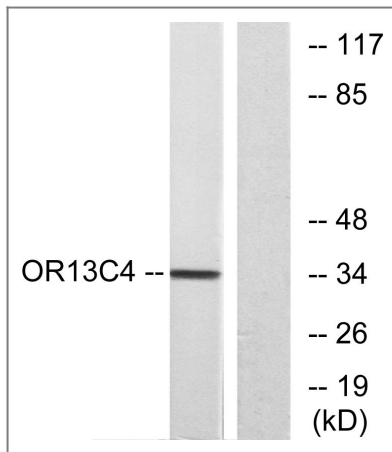
| Validation Data



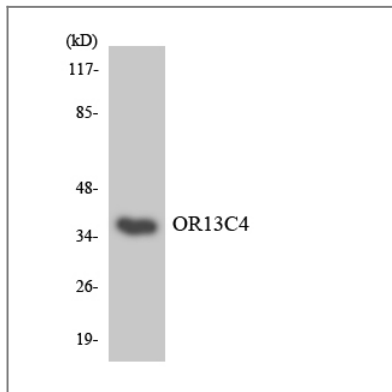
Western Blot analysis of various cells using Olfactory receptor 13C4 Polyclonal Antibody



Immunofluorescence analysis of LOVO cells, using OR13C4 Antibody. The picture on the right is blocked with the synthesized peptide.



Western blot analysis of lysates from COS7 cells, using OR13C4 Antibody. The lane on the right is blocked with the synthesized peptide.



Western blot analysis of the lysates from HepG2 cells using OR13C4 antibody.

Contact information

Orders: order@immunoway.com
 Support: tech@immunoway.com
 Telephone: 877-594-3616 (Toll Free), 408-747-0185
 Website: <http://www.immunoway.com>
 Address: 2200 Ringwood Ave San Jose, CA 95131 USA



Please scan the QR code to access additional product information:
**Olfactory receptor
 13C4 Rabbit pAb**

For Research Use Only. Not for Use in Diagnostic Procedures.

[Antibody](#) | [ELISA Kits](#) | [Protein](#) | [Reagents](#)