

Olfactory receptor 13C3 Rabbit pAb

CatalogNo: YT3273

Key Features

Host Species

- Rabbit

Reactivity

- Human

Applications

- WB,IF,ELISA

MW

- 35kD (Observed)

Isotype

- IgG

Storage

Storage* -15°C to -25°C/1 year(Do not lower than -25°C)

Formulation Liquid in PBS containing 50% glycerol, 0.5% BSA and 0.02% sodium azide.

Recommended Dilution Ratios

WB 1:500-1:2000

IF 1:200-1:1000

ELISA 1:10000

Not yet tested in other applications.

Basic Information

Clonality Polyclonal

Immunogen Information

Immunogen The antiserum was produced against synthesized peptide derived from human OR13C3. AA range:201-250

Specificity Olfactory receptor 13C3 Polyclonal Antibody detects endogenous levels of Olfactory receptor 13C3 protein.

Target Information

Gene name OR13C3

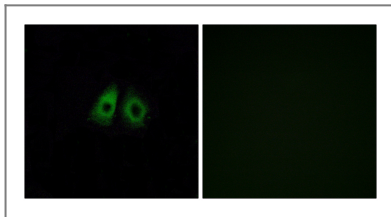
Protein Name Olfactory receptor 13C3

Organism	Gene ID	UniProt ID
Human	138803 ;	Q8NGS6 ;

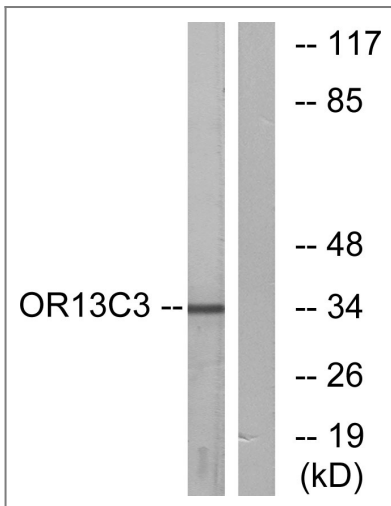
Cellular Localization Cell membrane; Multi-pass membrane protein.

Function Caution:It is uncertain whether Met-1 or Met-31 is the initiator.,Function:Odorant receptor
.,similarity:Belongs to the G-protein coupled receptor 1 family.,

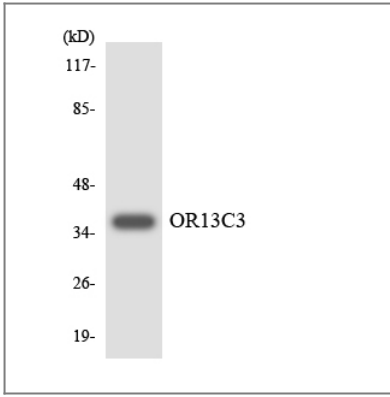
Validation Data



Immunofluorescence analysis of A549 cells, using OR13C3 Antibody. The picture on the right is blocked with the synthesized peptide.



Western blot analysis of lysates from LOVO cells, using OR13C3 Antibody. The lane on the right is blocked with the synthesized peptide.



Western blot analysis of the lysates from HeLa cells using OR13C3 antibody.

Contact information

Orders: order@immunoway.com
Support: tech@immunoway.com
Telephone: 877-594-3616 (Toll Free), 408-747-0185
Website: <http://www.immunoway.com>
Address: 2200 Ringwood Ave San Jose, CA 95131 USA



Please scan the QR code to access additional product information:

**Olfactory receptor
13C3 Rabbit pAb**

For Research Use Only. Not for Use in Diagnostic Procedures.

[Antibody](#) | [ELISA Kits](#) | [Protein](#) | [Reagents](#)