

Olfactory receptor 10Z1 Rabbit pAb

CatalogNo: YT3268

Key Features

Host Species

- Rabbit

Reactivity

- Human, Monkey

Applications

- WB, IF, ELISA

MW

- 38kD (Observed)

Isotype

- IgG

Storage

Storage* -15°C to -25°C/1 year (Do not lower than -25°C)

Formulation Liquid in PBS containing 50% glycerol, 0.5% BSA and 0.02% sodium azide.

Recommended Dilution Ratios

WB 1:500-1:2000

IF 1:200-1:1000

ELISA 1:20000

Not yet tested in other applications.

Basic Information

Clonality Polyclonal

Immunogen Information

Immunogen The antiserum was produced against synthesized peptide derived from human OR10Z1. AA range: 201-250

Specificity Olfactory receptor 10Z1 Polyclonal Antibody detects endogenous levels of Olfactory receptor 10Z1 protein.

Target Information

Gene name OR10Z1

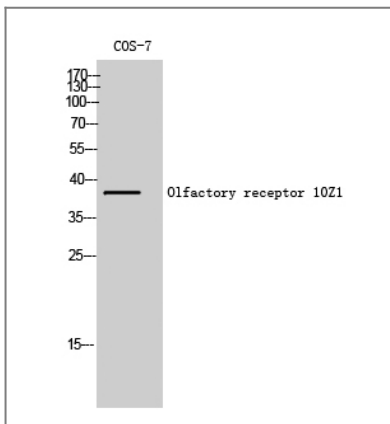
Protein Name Olfactory receptor 10Z1

Organism	Gene ID	UniProt ID
Human	128368 ;	Q8NGY1 ;

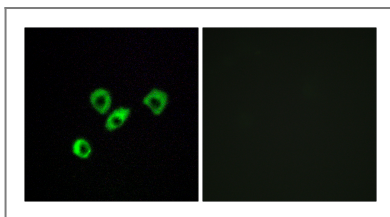
Cellular Localization Cell membrane; Multi-pass membrane protein.

Function Function:Odorant receptor .,similarity:Belongs to the G-protein coupled receptor 1 family.,

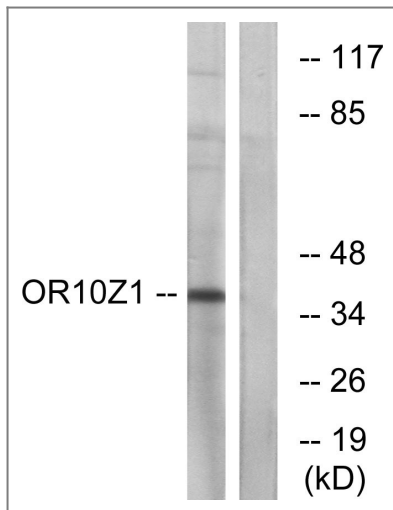
Validation Data



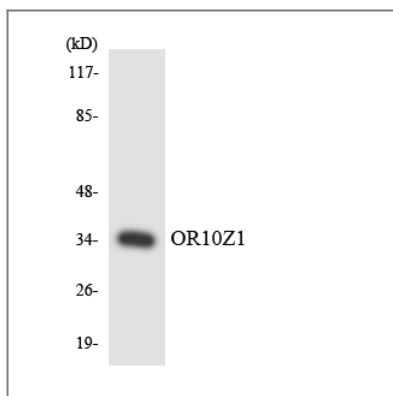
Western Blot analysis of COS-7 cells using Olfactory receptor 10Z1 Polyclonal Antibody



Immunofluorescence analysis of MCF7 cells, using OR10Z1 Antibody. The picture on the right is blocked with the synthesized peptide.



Western blot analysis of lysates from COS7 cells, using OR10Z1 Antibody. The lane on the right is blocked with the synthesized peptide.



Western blot analysis of the lysates from HeLa cells using OR10Z1 antibody.

Contact information

Orders: order@immunoway.com
 Support: tech@immunoway.com
 Telephone: 877-594-3616 (Toll Free), 408-747-0185
 Website: <http://www.immunoway.com>
 Address: 2200 Ringwood Ave San Jose, CA 95131 USA



Please scan the QR code to access additional product information:
Olfactory receptor 10Z1 Rabbit pAb

For Research Use Only. Not for Use in Diagnostic Procedures.

[Antibody](#) | [ELISA Kits](#) | [Protein](#) | [Reagents](#)