

Olfactory receptor 10V1 Rabbit pAb

CatalogNo: YT3266

Key Features

Host Species

- Rabbit

Reactivity

- Human

Applications

- WB,IF,ELISA

MW

- 40kD (Observed)

Isotype

- IgG

Recommended Dilution Ratios

WB 1:500-1:2000

IF 1:200-1:1000

ELISA 1:20000

Not yet tested in other applications.

Storage

Storage*

-15°C to -25°C/1 year(Do not lower than -25°C)

Formulation

Liquid in PBS containing 50% glycerol, 0.5% BSA and 0.02% sodium azide.

Basic Information

Clonality

Polyclonal

Immunogen Information

Immunogen

The antiserum was produced against synthesized peptide derived from human OR10V1. AA range:161-210

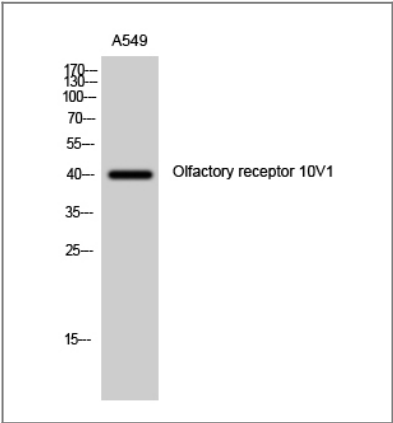
Specificity

Olfactory receptor 10V1 Polyclonal Antibody detects endogenous levels of Olfactory receptor 10V1 protein.

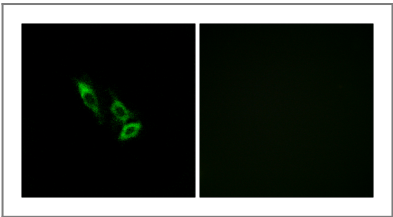
| Target Information

Gene name	OR10V1		
Protein Name	Olfactory receptor 10V1		
	Organism	Gene ID	UniProt ID
	Human	390201 ;	Q8NGI7 ;
Cellular Localization	Cell membrane; Multi-pass membrane protein.		
Function	Function:Odorant receptor .,similarity:Belongs to the G-protein coupled receptor 1 family.,		

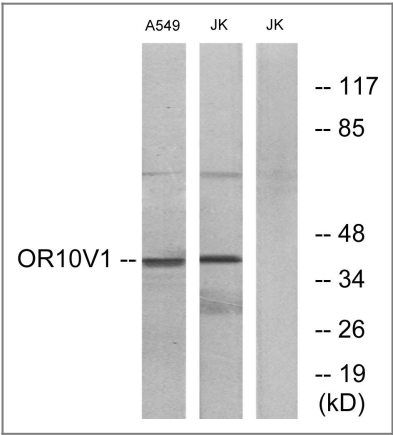
| Validation Data



Western Blot analysis of A549 cells using Olfactory receptor 10V1 Polyclonal Antibody



Immunofluorescence analysis of A549 cells, using OR10V1 Antibody. The picture on the right is blocked with the synthesized peptide.



Western blot analysis of lysates from A549 and Jurkat cells, using OR10V1 Antibody. The lane on the right is blocked with the synthesized peptide.

| Contact information

Orders: order@immunoway.com
Support: tech@immunoway.com
Telephone: 877-594-3616 (Toll Free), 408-747-0185
Website: <http://www.immunoway.com>
Address: 2200 Ringwood Ave San Jose, CA 95131 USA



Please scan the QR code
to access additional
product information:

**Olfactory receptor
10V1 Rabbit pAb**

For Research Use Only. Not for Use in Diagnostic Procedures.

[Antibody](#) | [ELISA Kits](#) | [Protein](#) | [Reagents](#)